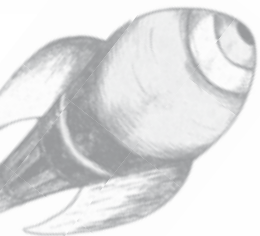


sarba

Passion for play



SPACE CITY

playground equipment



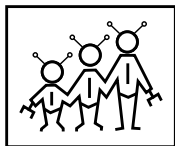
sarba



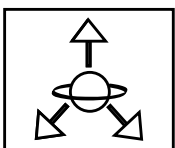
SPACE CITY

playground equipment

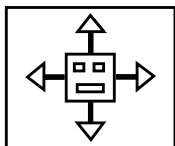
INFO



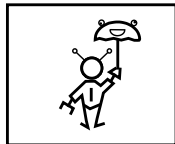
Età d'uso consigliata
Recommended user age
Tranche d'âge
Edad de uso aconsejada
Idade aconselhada
Empfohlenes Alter



Misure d'ingombro della struttura
Overall dimensions of structure
Dimensions de la structure
Medidas de la estructura
Dimensões de estrutura
Ausmaße des Gerätes



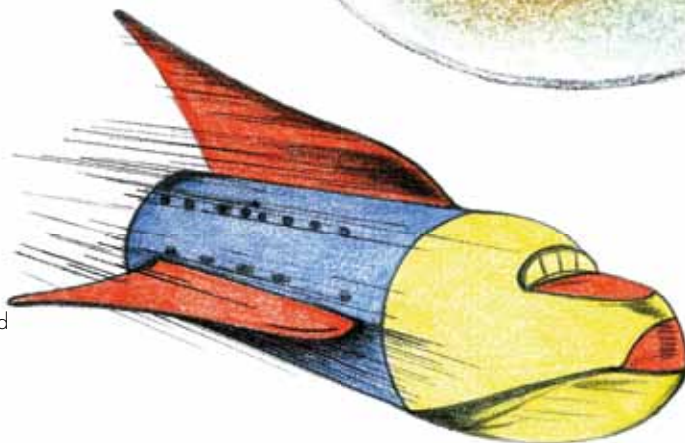
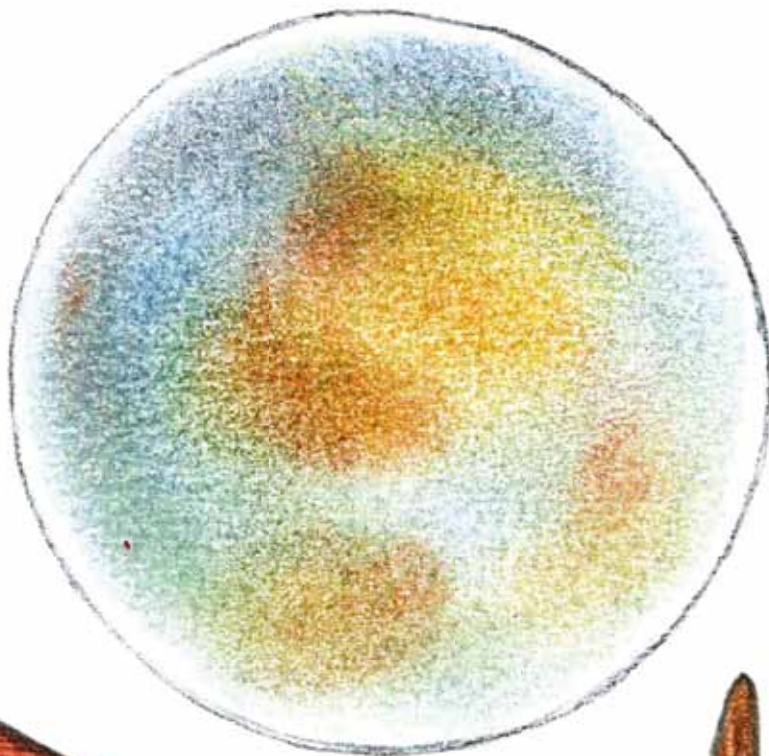
Spazio d'uso consigliato
Recommended space requirements
Espace de sécurité
Espacio de uso aconsejado
Area de segurança aconselhada
Empfohlener Sicherheitsbereich



Altezza di caduta
Height of fall
Hauteur de chute
Altura de caída
Altura de queda
Freie Fallhöhe

EN 1176

Normativa di sicurezza
Safety standards
Règles de sécurité
Normativa de seguridad
Normas de segurança
Sicherheitsnorm



sarba



SPACE CITY



La Linea "Space City" rappresenta il futuro e l'innovazione.

I materiali e la robustezza consentono di ridurre drasticamente i problemi di manutenzione.

Le forme e il design sono moderne e ricercate, praticamente uniche.

The "Space City" line represents the future and innovation. The materials used and sturdiness of this line make it possible to drastically reduce maintenance problems. The shapes and design are modern and elegant, practically one of a kind.

La ligne "Space City" représente le projet d'avenir et l'innovation. La robustesse des matériaux permet de réduire au minimum les problèmes d'entretien. Les formes et le design sont modernes et recherchés, pratiquement uniques.



sarba



La Línea "Space City" representa el futuro y la innovación. Los materiales y la robustez permiten reducir drásticamente cualquier problema de mantenimiento. Las formas y el diseño son modernos y exclusivos, prácticamente únicos.

A linha "Space City" representa o futuro e a inovação. Os materiais e a robustez permitem reduzir drasticamente os problemas de manutenção. As formas e o design são modernos e requintados, praticamente únicos.

Die Linie "Space City" steht für Zukunft und Innovation. Ihre Materialien und die Solidität reduzieren den Wartungsbedarf auf ein Minimum. Die Formen und das Design sind in ihrer Modernität und Eleganz praktisch einzigartig.



sarba

Azienda

Sarba spa produce giochi per parchi e arredo urbano di alta qualità dal 1959. Cinquanta anni di esperienza che Sarba mette a disposizione della propria clientela.

Sarba spa esporta i suoi prodotti in tutta Europa ed è azienda leader per qualità e servizi.

La produzione Sarba si articola su due linee di prodotto, la "Classic" caratterizzata da attrezzature in legno lamellare e compensato laccato di consolidata robustezza e design classico.

La linea "Space" utilizza, per i suoi prodotti, tubolare in acciaio a grande spessore galvanizzato e verniciato a polvere.

I prodotti della linea Space hanno un design attuale e moderno, ma soprattutto sono stati progettati per essere indistruttibili.

Factory

Sarba spa has been manufacturing top-quality park play systems and site amenities since 1959. Fifty years of experience which Sarba places at the disposal of its customers.

Sarba spa exports its products throughout Europe and leads the field in terms of quality and services.

Sarba products are split into two lines, "Classic" distinguished by equipment in sturdy laminated wood and lacquered plywood with a classic design. "Space" products made of extra-thick galvanised and powdercoated tubular steel. Space line products have a very trendy and modern design, but above all have been conceived to be indestructible.

Usine

Depuis 1959, Sarba spa fabrique des jeux de grande qualité, destinés à l'aménagement des parcs et des villes. Cinquante ans d'expérience que Sarba met à la disposition de sa clientèle.

Entreprise leader pour la qualité offerte et les services assurés, Sarba spa exporte ses fabrications dans toute l'Europe.

La production Sarba comporte deux lignes : l'une, dite "Classic", caractérisée par des équipements en bois lamellé et contre-plaqué, d'une solidité éprouvée et d'un design classique ; l'autre, "Space", réalisée en tubes d'acier très épais, galvanisé et peint par poudrage polyester.

Conçus pour être indestructibles, les produits de la ligne Space présentent un design actuel et moderne.

FACTORY



Lorenzo Barbieri
Sarba spa chairman

Fábrica

Sarba spa produce juegos para parques y mobiliario urbano de alta calidad desde 1959. Cincuenta años de experiencia que Sarba pone a disposición de su clientela.

Sarba spa exporta sus productos en toda Europa y es líder por su calidad y sus servicios.

La producción Sarba se articula en dos líneas de producto: la "Classic", caracterizada por equipos de madera laminada y contrachapada lacada de consolidada robustez y diseño clásico; y la línea "Space", cuyos productos están realizados en tubular de acero de gran espesor galvanizado y pintado al polvo.

Los productos de la línea Space tienen un diseño actual y moderno pero, sobre todo, han sido diseñados para ser indestructibles.

Fábrica

A Sarba spa produz brinquedos para parques infantis e mobiliário urbano de alta qualidade desde 1959. Cinqüenta anos de experiência que a Sarba põe à disposição dos seus clientes.

A Sarba spa exporta seus produtos para toda a Europa e é uma empresa líder em termos de qualidade e serviços oferecidos.

A produção da Sarba articula-se em duas linhas de produtos: a "Classic", caracterizada por estruturas realizadas com madeira lamelar e painéis de compensado lacado de robustez consolidada e design clássico, e a linha "Space" que utiliza para os seus produtos perfis tubulares de aço de grande espessura, galvanizado e pintado com pó. Os produtos da linha Space têm um design actual e moderno, mas sobretudo foram projectados para serem indestrutíveis.

Unternehmen

Sarba spa stellt seit 1959 hochwertige Spielgeräte für den öffentlichen Bereich und Stadtmöbel her und kann somit 50 Jahre Erfahrung aufweisen.

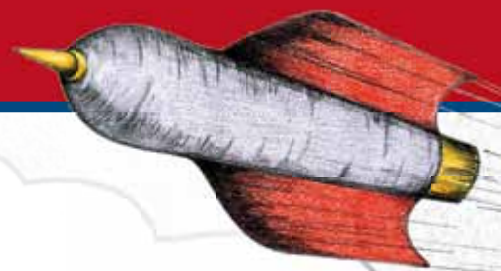
In Bezug auf Qualität und Service ist Sarba spa Marktführer in Italien und arbeitet seit vielen Jahren sehr erfolgreich auch auf dem Europäischen Markt.

Bei den Spielgeräten wird zwischen den Linien "Classic" aus Holz mit klassischen Design und "Space City" aus Metall und innovativem Design unterschieden.

Die tragenden Teile der Linie "Classic" bestehen aus Kiefernholz mit eingearbeiteten Stahlrahmen. Die Seitenteile sind aus hochwertigem, lackierten Multiplex-Schichtholz oder aus HPL-Laminat gefertigt.

Für die nahezu unverwundlichen Geräte der Linie "Space City" werden verzinkte und pulverbeschichtete Gitterrohre aus Stahl verwendet, darüber hinaus kommen HPL- und Aluminiumplatten zum Einsatz.

PRODUCTION



Reparto di produzione

Tutti i prodotti Sarba vengono ideati, progettati e prodotti interamente nello stabilimento di 12.000 m² di Carpi (Modena). I prodotti Sarba sono realizzati con cura e finiture artigianali. Gli impianti di verniciatura, meccanica e falegnameria sono attrezzati con apparecchiature di ultima generazione.

Production

Sarba products are carefully made and feature artisan finishes. The coating, mechanical and joinery departments feature highly modern latest-generation equipment. All Sarba products are conceived, designed and made entirely in the company's 12,000 sq mt facility at Carpi (Modena).

Atelier de fabrication

Réalisés avec le plus grand soin, les produits Sarba font l'objet de finitions artisanales. Les cabines de peinture, les ateliers de mécanique et de menuiserie sont équipés de matériel de dernière génération. Tous les produits Sarba sont conçus et fabriqués à Carpi (près de Modène), dans une usine de 12.000 m².

sarba



Departamento de producción

Los productos Sarba están realizados con sumo cuidado y sus acabados son artesanales. Los talleres de pintura, de mecánica y de carpintería están equipados con equipos modernos y de última generación. Todos los productos Sarba son ideados, diseñados y realizados completamente en el establecimiento de 12.000 m² de Carpi, Modena.

Secção de Produção

Os produtos da Sarba são realizados com a máxima atenção e com acabamentos artesanais. As secções de pintura e os departamentos de mecânica e carpintaria são equipados com máquinas ultra modernas e de última geração. Todos os produtos da Sarba são idealizados, projectados e realizados inteiramente na fábrica de 12.000 m² de Carpi, província de Modena, Itália.

Produktion

Alle Geräte von Sarba werden in unserem 12.000 m² großen Werk in Carpi bei Modena in Norditalien entwickelt, produziert und getestet. In der Holz- und Metallverarbeitung sowie in der hauseigenen Lackiererei kommen die modernsten Maschinen zum Einsatz. Dennoch werden die Sarba-Geräte mit handwerklicher Sorgfalt und Liebe zum Detail gefertigt.

PROJECT

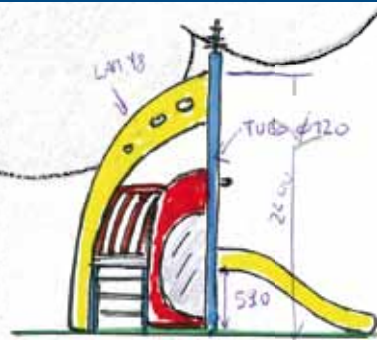
Design

Naturally, the creation of a functional play park is not merely a matter of supply and installation of type-approved play equipment. Good play park design takes into consideration all environmental factors such as, for example, the type of ground, spaces at disposal, park access, site amenities and any possible hazards.

Play park design should precede the purchase of play systems and site amenities to avoid future surprises.

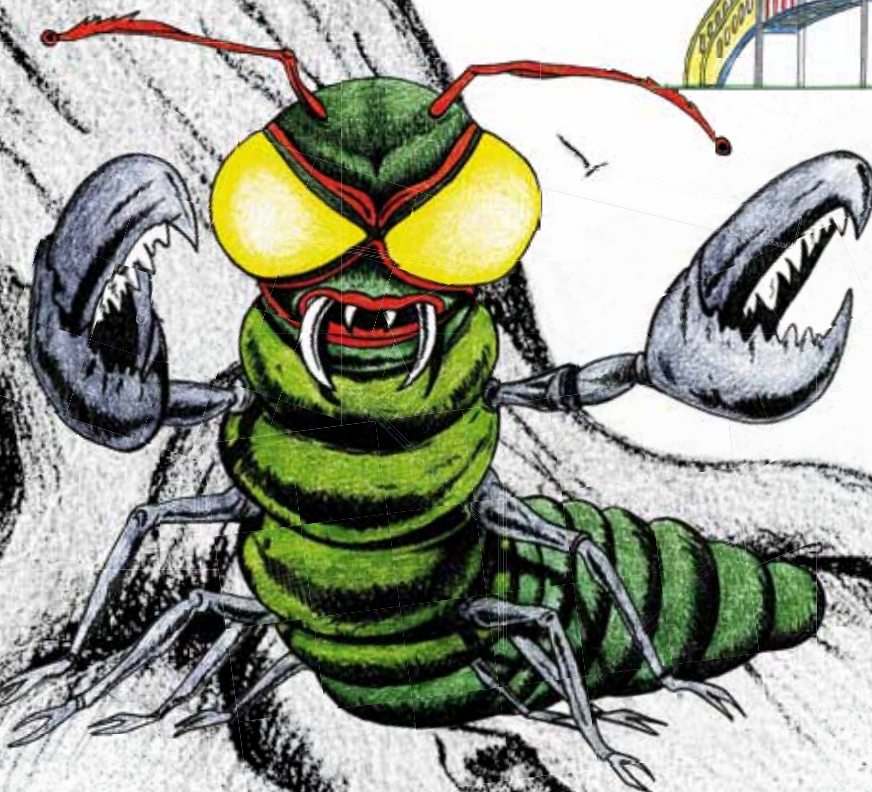
Design e progettazione

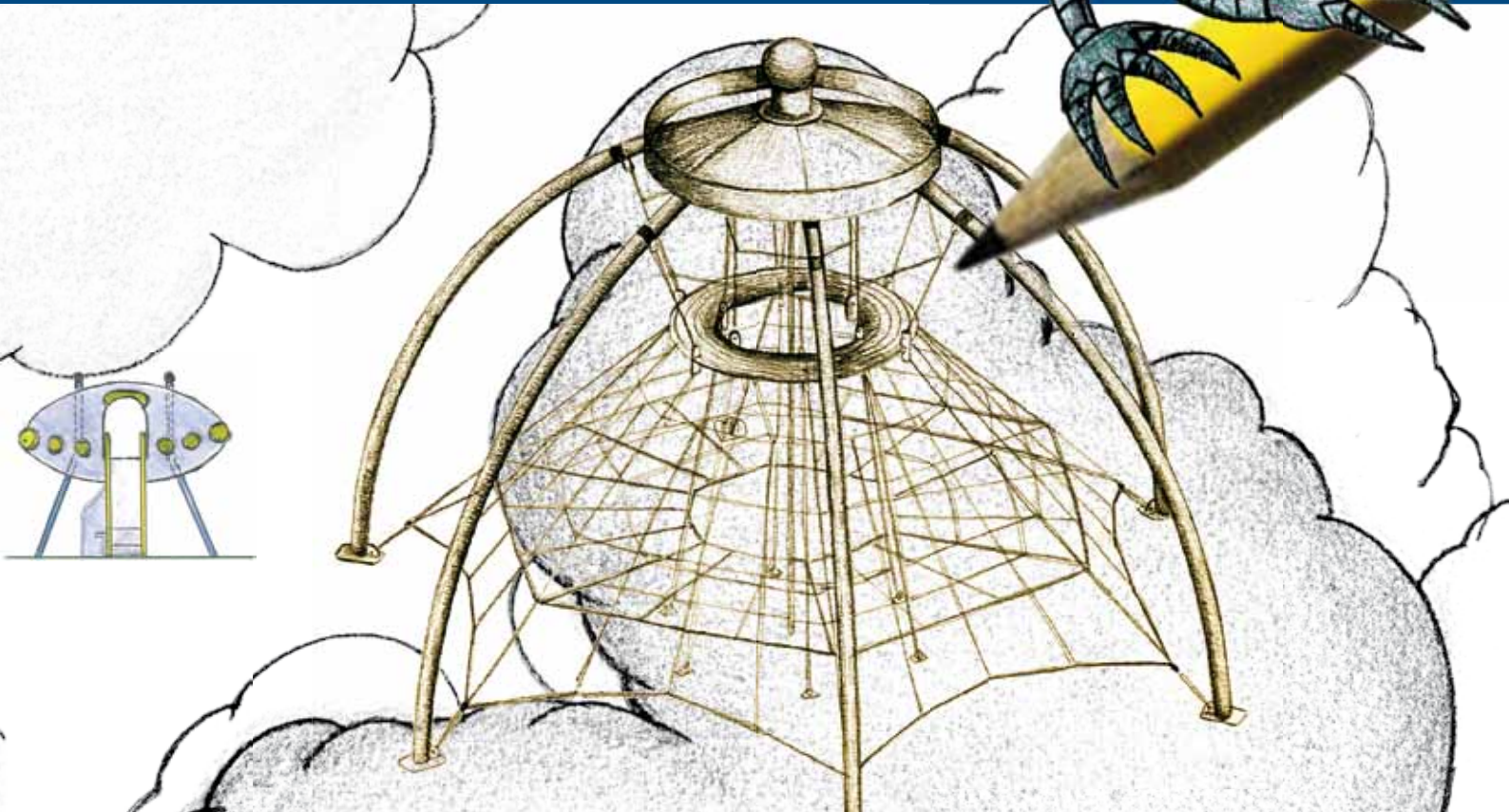
Naturalmente la creazione di un parco gioco funzionale non è solo una questione di fornitura e posa di attrezzature ludiche omologate. Una buona progettazione di parchi gioco prende in considerazione tutti i fattori ambientali presenti, come ad esempio il tipo di terreno, spazi a disposizione, accesso al parco, oggetti di arredo urbano ed eventuali pericoli presenti. La progettazione dei parchi gioco dovrebbe precedere l'acquisto delle attrezzature ludiche e dell'arredo urbano per evitare sorprese in futuro.



Conception

La création d'un parc de jeux fonctionnel ne consiste pas simplement à fournir et à poser des équipements homologués. Pour que la conception d'un parc de jeu soit correcte, elle doit prendre en compte tous les facteurs environnementaux existants, comme par exemple le type de sol, les espaces à disposition, l'accès, le mobilier urbain et les risques potentiels. La conception d'aires de jeu doit précéder l'achat des équipements ludiques et du mobilier urbain pour éviter que l'avenir ne réserve des surprises.





Project

Naturalmente, la creación de un parque de juegos funcional no es sólo una cuestión de suministro y colocación de equipos lúdicos homologados. Un buen diseño de parques de juego debe tomar en consideración todos los factores ambientales presentes, tales como el tipo de terreno, los espacios a disposición, el acceso al parque, los objetos de mobiliario urbano y los posibles peligros presentes, entre otros. El diseño de los campos de juego debería preceder a la compra de los equipos lúdicos y del mobiliario urbano, para evitar sorpresas en el futuro.



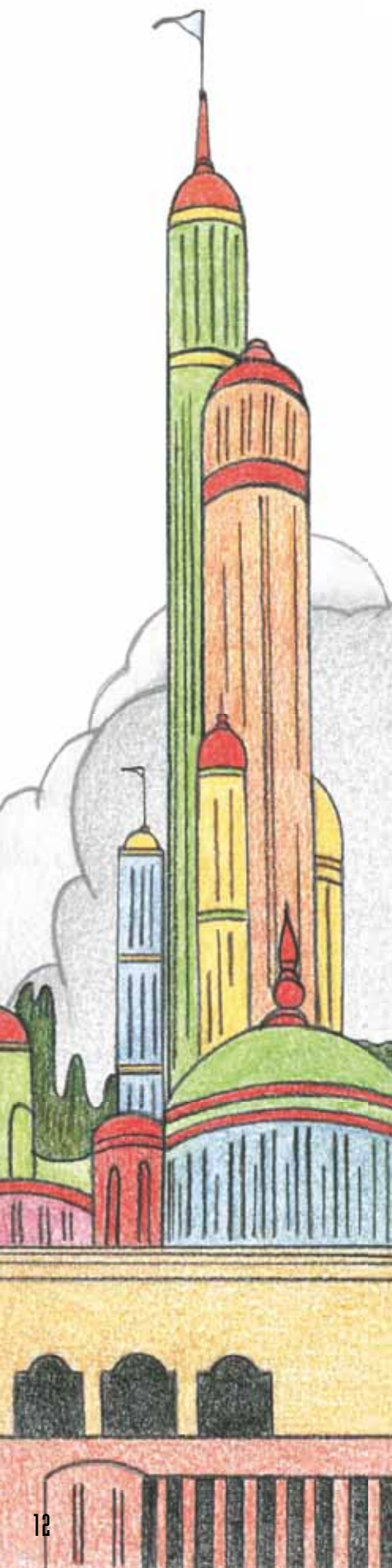
Projecto

Naturalmente, a criação de um parque infantil funcional não é apenas uma questão de fornecimento e instalação de equipamentos lúdicos homologados. Um bom projecto de parques infantis leva em conta todos os factores ambientais presentes tais como, por exemplo, o tipo de terreno, os espaços disponíveis, o acesso ao parque, os objectos de mobiliário urbano e os eventuais perigos presentes. O projecto dos parques infantis deve anteceder a compra dos equipamentos lúdicos e do mobiliário urbano para evitar surpresas no futuro.

Projektierung

Beim Bau eines Spielplatzes kommt es nicht nur auf die Lieferung und die Montage von Spielgeräten an. Die professionelle Projektierung der Spielplätze berücksichtigt die örtlichen Gegebenheiten eines Platzes, wie die Beschaffenheit des Untergrundes, die Ausmaße und den Zugang der vorhandenen Flächen, das eventuell bereits vorhandene Stadtmobiliar, potenzielle Gefahrenpunkte etc. Die Projektierung der Spielplätze sollte dem Erwerb der Spielgeräte vorausgehen, um maximale Sicherheit und Spielfreude zu gewährleisten.

MATERIAL



Le attrezzature SARBA sono costruite in modo tale da garantire la massima efficienza e sicurezza nel tempo.

I materiali utilizzati nella produzione dei prodotti della Serie "Space City", rappresentano il risultato della ricerca di ultima generazione. La struttura portante di questi prodotti costituita da tubi di acciaio di grossi diametri, zincati caldo e verniciati in poliesteres previo trattamento di galvanizzazione. Le pannellature sono in alluminio naturale e verniciato, in laminato per esterni o acciaio inox. Gli elementi di fissaggio sono in acciaio inox e nylon, le reti in trefolo di acciaio rivestito da poliesteres. Tutti questi materiali oppongono una naturale resistenza all'atto vandalico e sono praticamente indistruttibili. Tutti giochi sono conformi alle Norme Europee EN 1176-2008.

The Sarba equipment is constructed in order to obtain the maximum efficiency and security over a long period of time. The materials used in the production of the line "Space City" are the result of the research of last generation. The supporting structure of these products is constructed from hot galvanized, polyester coated, large-diameter steel tubes. The panels are made of natural and painted aluminium, stainless steel or HPL. The fasteners are in stainless steel and nylon; the nets are made of polyester coated steel cable. All materials create a natural resistance against vandalism and they are, practically speaking, indestructible. All playground equipment conforms with European norms (EN 1176-2008).

Le matériel SARBA est construit dans le but d'obtenir le maximum d'efficacité et de sécurité dans le temps. Les matériaux utilisés pour la production de la gamme "Space City" sont le fruit d'une recherche de dernière génération. Les poteaux porteurs des jeux sont construits à partir de tube acier de gros diamètre, galvanisé à chaud recouvert par une peinture polyester. Les panneaux sont : en aluminium naturel peint - en stratifié compact (HPL) - ou inox. Les éléments de fixation sont en inox ou nylon, les filets sont en polyester armé d'une âme acier. Tous les matériaux utilisés sont robustes et particulièrement adaptés contre le vandalisme. Ils sont pratiquement "indestructibles". Tous les jeux sont conformes aux Normes Européennes EN 1176-2008."

Los aparos de Sarba están constituidos de tal modo que podemos garantizar la máxima eficiencia, seguridad y durabilidad en el tiempo. Los materiales utilizados en la producción de los productos de la Serie "Space City", representan el resultado de la búsqueda de última generación. La estructura portante de estos productos esta constituida por tubos de acero de grandes diámetros, cincados al calor y barnizados de poliéster previo trato de galvanización. Los elementos de fijación son de acero inoxidable y nylon, las redes en trefolo de acero revestido por poliéster. Todos los juegos están conformes a las Normas europeas EN 1176-2008.

O equipamento SARBA é construído de forma a garantir a máxima eficiência e segurança no tempo. Os materiais utilizados nos produtos da Série "Space City" representam o resultado de uma investigação de última geração. A estrutura de suporte destes produtos é constituída por tubos de aço de grandes diâmetros, zincados a quente e lacados a poliester após tratamento de galvanização. Os painéis são em alumínio natural e lacado, laminado para exteriores ou aço inox. Os elementos de fixação são em aço inox e nylon, as redes em aço trefilado revestido a poliester. Todos estes materiais apresentam uma resistência natural a actos de vandalismo e são praticamente indestrutíveis. Todos os aparelhos são conformes com as Normas Europeias EN 1176-2008.

Die Geräte von Sarba sind so konstruiert, dass sie auf Dauer maximale Effizienz und Sicherheit gewährleisten.

Die für die "Space City" verwendeten Materialien entsprechen dem neuesten Stand der Forschung. Die tragenden Rahmen dieser Geräte bestehen aus Stahlrohren mit großem Durchmesser, die in Galvanisationsverfahren warmverzinkt und anschließend pulverbeschichtet lackiert werden. Die Brüstungspaneel bestehen aus lackiertem Aluminium, Hochdrucklaminaten oder Edelstahl. Bei den Befestigungselementen kommen Edelstahl und Nylon zum Einsatz. Die Kletternetze enthalten mehrere Stahllitzen, die mit hoch abriebfestem Polyamidgarn ummantelt sind. Alle verwendeten Materialien sind sehr langlebig und zeichnen sich auch bei Gewaltanwendung durch hohe Robustheit aus. Sämtliche Spielgeräte von Sarba entsprechen der europäischen Sicherheitsnorm EN 1176-2008.



sarba

QUALITY

La qualità

La certificazione ISO 9001 testimonia l'impegno profuso per garantire alla clientela che le attività Sarba vengono svolte attraverso elevati standard qualitativi.

The quality

ISO 9001 certification testifies to the commitment made to ensure customers that Sarba's products are distinguished by top quality standards.

La qualité

Notre certificat ISO 9001 témoigne de notre engagement à garantir à notre clientèle des process de fabrication à des niveaux de qualité élevés.

La calidad

El certificado ISO 9001 atestigua el profundo empeño para garantizar a los clientes que la actividad de Sarba se viene desarrollando a través de elevados standard de calidad.

A qualidade

A certificação ISO 9001 testemunha o grande empenho em garantir aos clientes que as actividades Sarba se desenrolam com elevados padrões de qualidade.

Die Qualität

Die Zertifizierung nach ISO 9001 dient den Kunden als Beleg für das überdurchschnittliche Engagement, mit dem bei Sarba höchste Qualitätsstandards erfüllt werden.



Sicurezza

Solo la certezza di acquistare prodotti costruiti secondo le norme più severe vi garantisce una scelta sicura per un futuro senza problemi. Tutte le attrezzature da gioco Sarba sono state collaudate ed omologate secondo le norme EN 1176-2008.

Safety

Only the certainty of purchasing products manufactured according to the most stringent standards gives you peace of mind and assures a trouble-free future. All Sarba play equipment is tested and approved according to EN 1176-2008.

La sécurité

La certitude d'acheter des produits construits selon les normes les plus rigoureuses vous garantit un choix sûr et fiable pour l'avenir. Tous les équipements Sarba ont été contrôlés et certifiés selon les normes EN 1176-2008.

Seguridad

Sólo la certeza de adquirir productos fabricados según la norma más severa le garantizan que no tendrá problemas en el futuro. Todas las estructuras de juego Sarba han estado fabricadas y homologadas según la norma EN 1176-2008.

A segurança

Só a certeza de adquirir produtos construídos conforme as normas de segurança mais rigorosas garante ao cliente uma escolha segura para um futuro sem problemas. Todos os aparelhos de jogo Sarba foram ensaiados e homologados conforme as normas EN 1176.

Sicherheit

Spielgeräte müssen auf Dauer Freude und Sicherheit bieten. Dies ist nur gewährleistet, wenn die höchsten Sicherheitsstandards berücksichtigt werden. Alle Spielgeräte von Sarba sind nach EN 1176-2008 geprüft und zertifiziert.

Ecologia:

La sensibilità dell'azienda per l'ambiente viene perseguita con un rigoroso programma di monitoraggio di tutte le fasi di lavorazione per garantire il rispetto della natura. Sarba ha infatti ottenuto il prestigioso certificato per la qualità ambientale ISO 14001.

Ecology

For our company, environment friendliness is a key factor pursued according to a stringent programme whereby all the various work stages are monitored and checked. Sarba has in fact been awarded the prestigious ISO 14001 environment quality certificate.

L'environnement

Sensible à la préservation de l'environnement, notre entreprise effectue des contrôles rigoureux à toutes les étapes de la production, et garantit ainsi le respect de la nature. Sarba a d'ailleurs obtenu le prestigieux certificat ISO 14001 pour la protection de l'environnement.

Ecología

La sensibilidad de la empresa por el medio ambiente ha propiciado la implantación de un programa de control de todas las fases de trabajo para garantizar el respeto de la naturaleza. En este aspecto Sarba ha obtenido el prestigioso certificado para la calidad ambiental ISO 14001.

Ecologia

A sensibilidade da empresa aos problemas ambientais traduz-se num rigoroso programa de monitorização de todas as fases de produção para garantir o respeito pela natureza. A Sarba obteve de facto o prestigioso certificado para a qualidade ambiental ISO 14001.

Umweltschutz

Sarba beweist große Sensibilität im Umgang mit der Natur. Ein Programm der konsequenten Überwachung aller Arbeitsphasen gewährleistet, dass die Produktionsabläufe zur Erhaltung des natürlichen Lebensraums beitragen. Dafür wurde Sarba mit dem bedeutenden Zertifikat für Umwelt-Qualität nach ISO 14001 ausgezeichnet.

Space City

Line

EN 1176

Base Alpha

SC/501



sarba



Base Alpha

SC/501

EN 1176



8-16



Ø cm 700 x 480 h



Ø cm 1100



cm 250





Sputnik

SC/502

EN 1176



6-16



cm 512 x 477 x 504 h



cm 910 x 880



cm 162





sarba

Sputnik center SC/502.01

EN 1176



6-16



cm 512 x 826 x 504 h



cm 910 x 1225

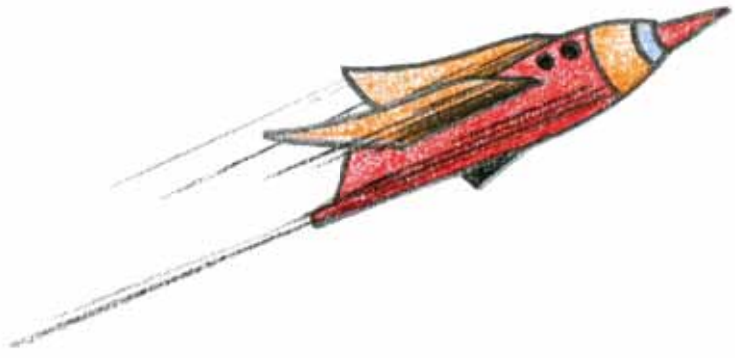


cm 162



sarba



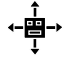





sarba

Sputnik
center 2
SC/502.02

EN 1176

	6-16
	cm 512 x 710 x 504 h
	cm 910 x 1100
	cm 162



Triton

SC/521

EN 1176



5-12



cm 132 x 390 x 250 h



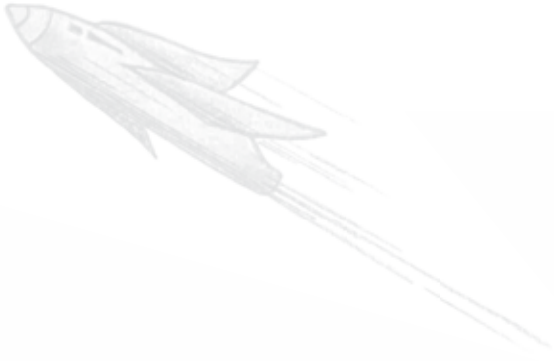
cm 530 x 790



cm 150



sarba



Vulcan

SC/540

EN 1176



3-8



cm 68 x 333 x 218 h



cm 480 x 735



cm 133



sarba



sarba

Voyager

SC/512

EN 1176



2-8



cm 231 x 305 x 357 h



cm 630 x 750



cm 93





sarba



Skylab

SC/542

EN 1176



3-12



cm 349 x 355 x 374 h



cm 750 x 755



cm 133



sarba



Skylab Baby SC/557

EN 1176



2-8



cm 325x220x339 h



cm 602x515



cm 93



Apollo

SC/548

EN 1176



2-8



cm 166 x 292 x 320 h



cm 565 x 690



cm 59



Predator

SC/513

EN 1176



1-6



cm 526 x 192 x 153 h



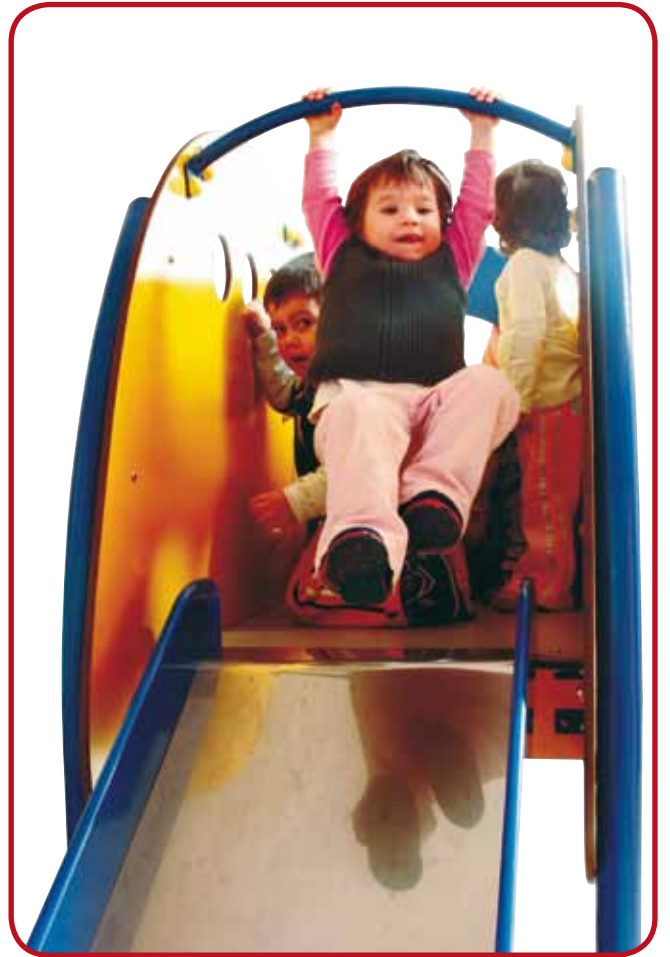
cm 926 x 592



cm 59



sarba



Arkanoid

SC/514

EN 1176



2-6



cm 265 x 240 x 152 h



cm 665 x 640



cm 82



sarba



Arkanoid 2

SC/514.01

EN 1176



1-6



cm 265 x 350 x 152 h



cm 665 x 750



cm 82


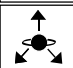
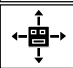



sarba




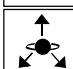
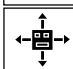



Jupiter
basic
SC/526.02
EN 1176



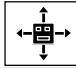

	1-6
	cm 207 x 295 x 225 h
	cm 610 x 695
	cm 59



Jupiter
SC/526
EN 1176

	1-6
	cm 327 x 483 x 225 h
	cm 730 x 880
	cm 59



<p>Jupiter center</p> <p>SC/526.01</p> <p>EN 1176</p>		1-6
		cm 405 x 647 x 225 h
		cm 805 x 1050
		cm 59

sarba

Soquuz 01

SC/547.01

EN 1176



3-12



cm 613 x 451 x 380 h



cm 990 x 845



cm 133/93



sarba





Soquz

SC/547

EN 1176



3-12



cm 590 x 447 x 375 h



cm 990 x 845



cm 133/93



sarba



Ufo Swing

SC/505

EN 1176



1-12



cm 202 x 347 x 222 h



cm 720 x 750



cm 132



Kosmica

SC/525

EN 1176



5-12



cm 586 x 616 x 230 h



cm 985 x 1015



cm 132



sarba

Space Spinner SC/529

EN 1176



5-12



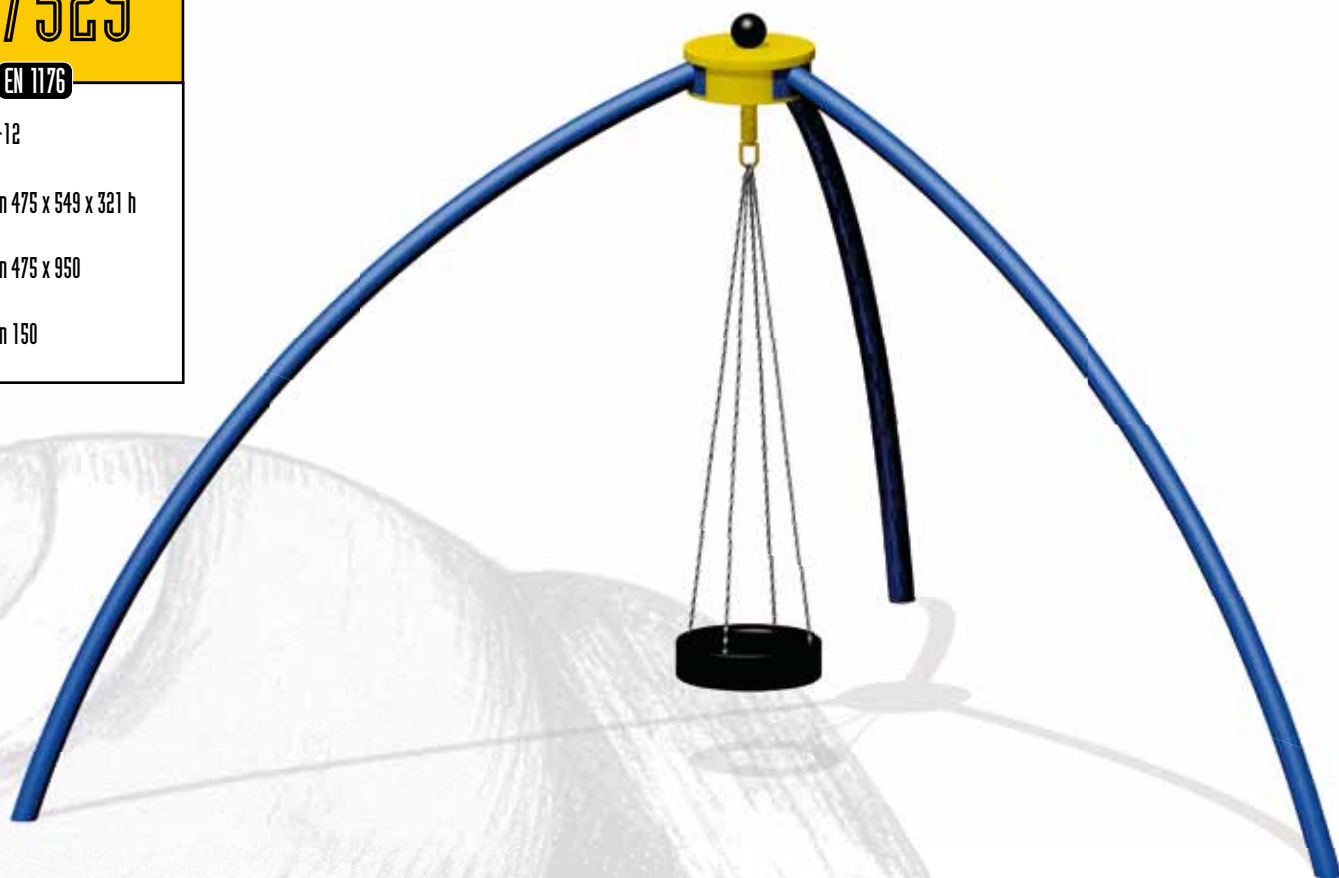
cm 475 x 549 x 321 h



cm 475 x 950



cm 150



Star Swing SC/538

EN 1176



1-12



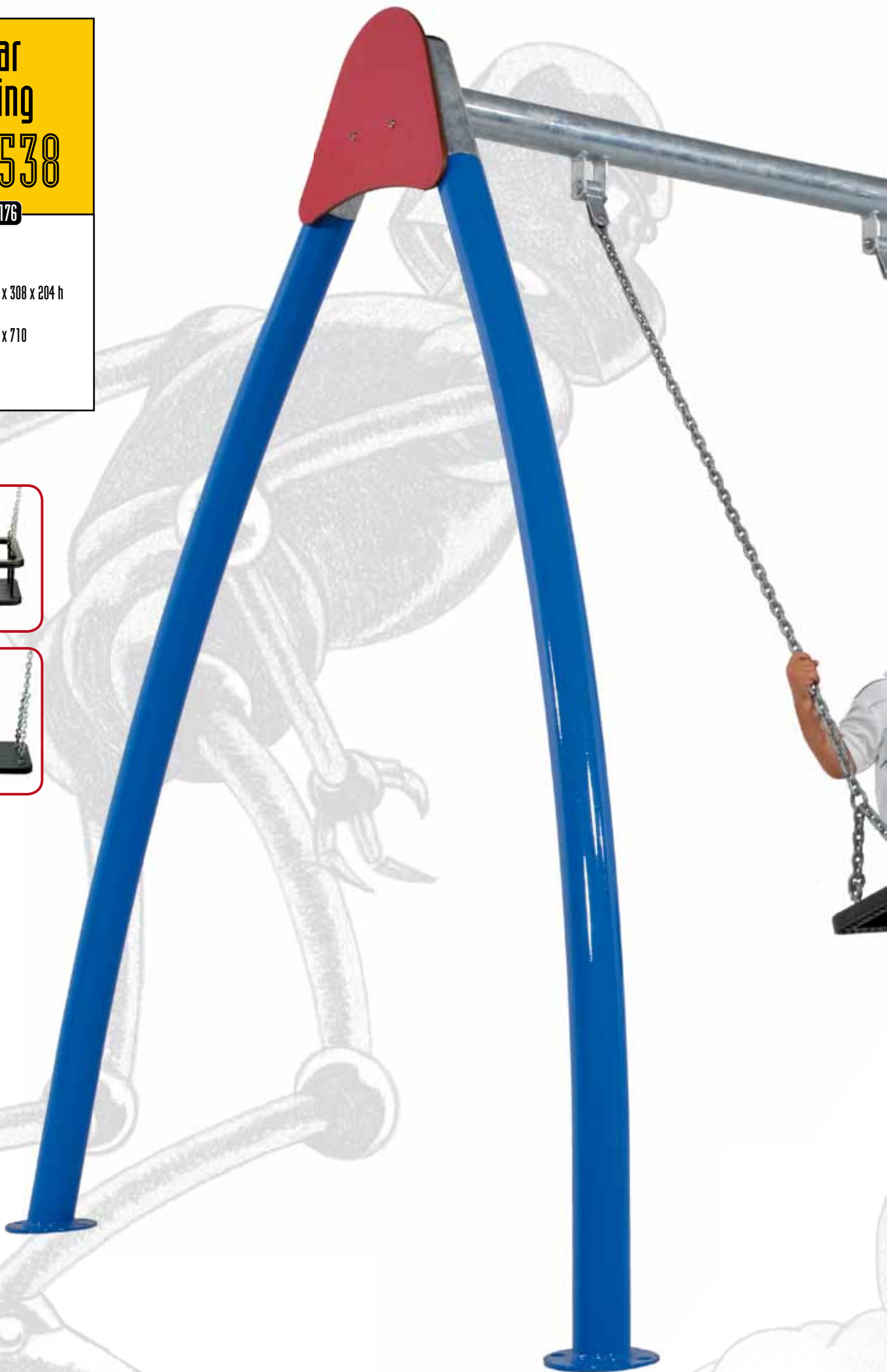
cm 168 x 308 x 204 h



cm 570 x 710



cm 115





sarba

Star Swing Baby SC/555

EN 1176



1-12



cm 164 x 265 x 168 h



cm 650 x 300



cm 96



sarba





Asteroid

SC/516

EN 1176



8-16



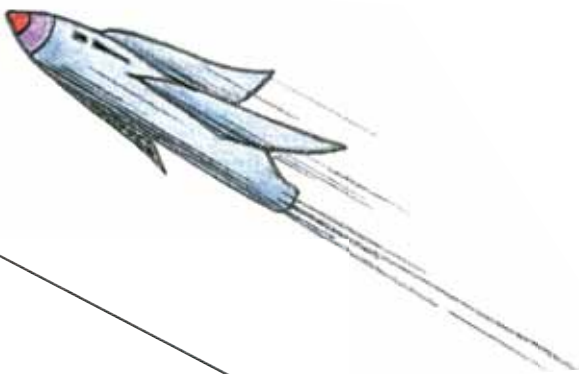
cm 495 x 2685 x 425 h



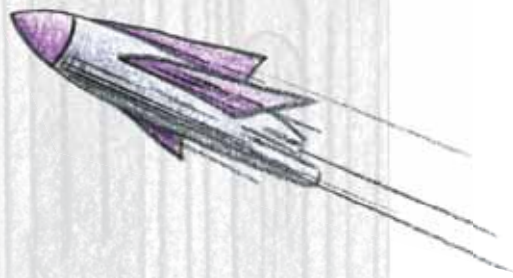
cm 895 x 3085



cm 100



sarba



sarba



Explorer

SC/508

EN 1176



3-12



∅ cm 184 x 181 h



∅ cm 585



cm 43



Ranger

SC/507

EN 1176



5-12



cm 94 x 219 x 102 h



cm 494 x 619



cm 85



Mir

SC/509

EN 1176



3-8



Ø cm 115 x 92 h



Ø cm 515



cm 42

sarba



Rea
SC/551

EN 1176

	3-8
	cm 38 x 86 x 82 h
	cm 440 x 485
	cm 51



Teti
SC/552

EN 1176

	3-8
	cm 34 x 90 x 84 h
	cm 435 x 490
	cm 52



Giapeto
SC/553

EN 1176

	3-8
	cm 34 x 95 x 85 h
	cm 435 x 495
	cm 52

Dione

SC/554

EN 1176



3-8



cm 34 x 93 x 79 h



cm 435 x 495



cm 52



Space Moto

SC/506

EN 1176



3-8



cm 59 x 37 x 80 h



cm 460 x 435





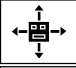

cm 46



Bor

SC/517

EN 1176


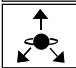
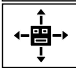

	1-6
	cm 42 x 80 x 71 h
	cm 440 x 480
	cm 44



Vostok

SC/519

EN 1176

	3-8
	cm 31 x 138 x 70 h
	cm 430 x 540
	cm 70



sarba



sarba



Enterprise

SC/520

EN 1176



3-12



cm 120 x 250 x 141 h



cm 520 x 650



cm 59



Scorpion

SC/511

EN 1176



-



cm 142 x 459 x 202 h



cm 450 x 860



cm 42



sarba



Alien

SC/503

EN 1176



12-16



cm 183 x 790 x 346 h



cm 580 x 1190



cm 220

Ganimede

SC/546

EN 1176



3-8



cm 151 x 439 x 230 h



cm 550 x 840



cm 99



Radar

SC/510

EN 1176



3-12



cm 150 x 209 x 180 h



cm 550 x 610



cm 180



Lander

SC/504

EN 1176



6-16



cm 241 x 242 x 339 h



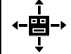



cm 640 x 640



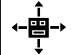



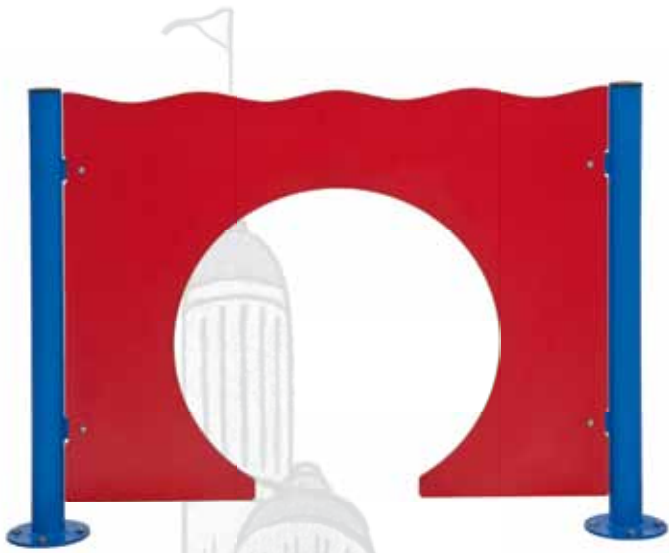
cm 100

sarba

<h1>Tube</h1> <h2>SC/523</h2> <p>EN 1176</p>	 6-16
	 cm 34 x 1829 x 127 h
	 cm 435 x 2230
	 -

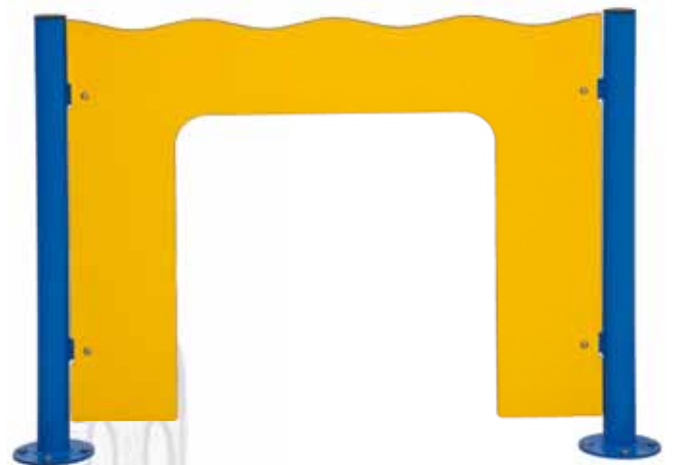


<h1>Europa</h1> <h2>SC/543</h2> <p>EN 1176</p>	 2-8
	 cm 240 x 28 x 58 h
	 cm 640 x 435
	 cm 58



Elettra C SC/539.c EN 1176	2-8
	cm 6 x 112 x 86 h
	cm 405 x 515
	-

Elettra Q SC/539.q EN 1176	2-8
	cm 6 x 112 x 86 h
	cm 405 x 515
	-



Elettra T SC/539.T EN 1176	2-8
	cm 6 x 112 x 86 h
	cm 405 x 515
	-

Io SC/545

EN 1176



2-8



cm 240 x 75 x 85 h



cm 640 x 475



cm 25



Callisto SC/544

EN 1176



2-6



cm 293 x 109 x 149 h



cm 695 x 510



cm 30



Eliptica

SC/541

EN 1176



2-8



cm 45 x 276 x 25 h



cm 445 x 675



cm 25



Eliptica

SC/541.01

EN 1176



2-8



cm 183 x 340 x 25 h



cm 585 x 840



cm 25

sarba

Eliptica

SC/541.02

EN 1176



2-8



cm 47 x 520 x 25 h



cm 450 x 920


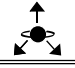
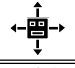



cm 25



sarba

sarba

Android SC/515 EN 1176	 1-6
	 cm 124 x 168 x 144 h
	 cm 525 x 570
	 -





Control Panel SC/522

EN 1176



2-6



cm 129 x 130 x 53 h



cm 330 x 330



-



Aquarius SC/536

EN 1176



2-6



cm 93 x 129 x 51 h

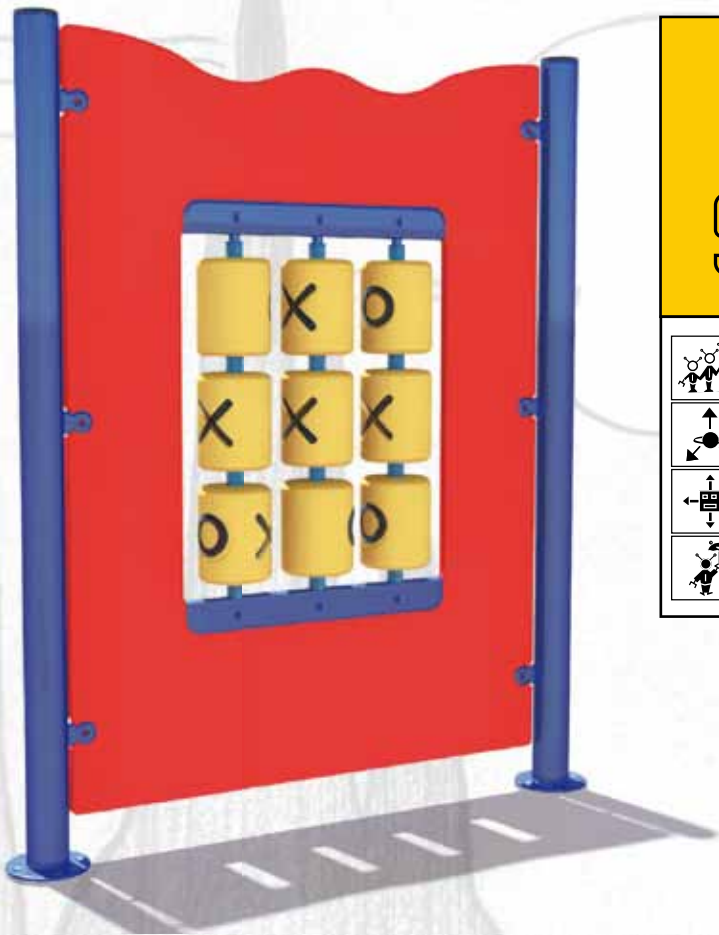


cm 495 x 530



-

sarba



Lem

SC/549

EN 1176

	3-12
	cm 15 x 124 x 150 h
	Ø cm 525
	-

Moebius

SC/532

EN 1176

	-
	cm 551 x 123 x 232 h
	cm 950 x 525
	-



Space Panel SC/535



-



cm 78 x 139 x 159 h



cm 280 x 340



-



Black Hole SC/533



-



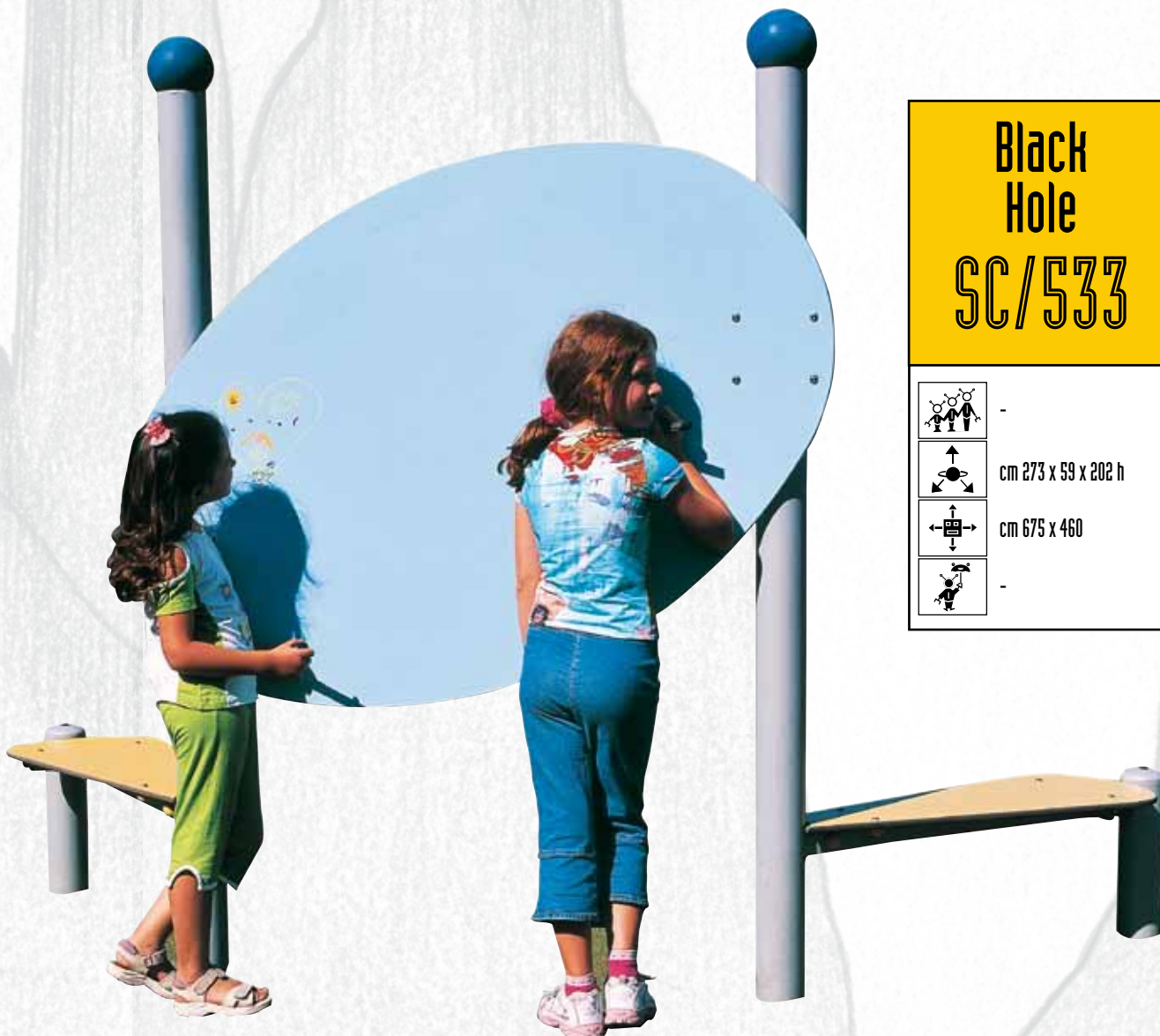
cm 273 x 59 x 202 h



cm 675 x 460



-





Stargate

SC/534



-



cm 268 x 18 x 250 h



cm 300 x 20



-



Astrolabio

SC/531



-



cm 145 x 133 x 173 h



cm 545 x 535



-

sarba



Saturn

SC/528

EN 1176



2-6



Ø cm 114 x 132 h



Ø cm 514



cm 14



Moon 01

SC/556.01

EN 1176



2-6



cm 370x96x264 h




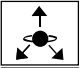
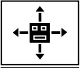

cm 575x370



cm 93





<h1>Moon</h1>	
<h2>SC/556</h2>	
EN 1176	
	2-6
	cm 370x76x167 h
	cm 575x370
	cm 93

sarba

Hubble

SC/570

EN 1176



2 - 8



cm 338x293x199 h



Ø cm 635x730



cm 96





Newton

SC/571

EN 1176



2-8



cm 378x160x224 h



cm 435x620



cm 97



sarba

Tolomeo

SC/572

EN 1176



2-8



cm 619x104x199 h



cm 916x400



cm 97





Galileo

SC/573

EN 1176



5 - 12



cm 688x337x199 h



cm 1050x700



cm 198

Galileo 2

SC/574

EN 1176



5 - 12



cm 544x337x199 h



cm 900x730



cm 198





sarba



Titan

SC/527

EN 1176



8-16



∅ cm 117 x 214 h



∅ cm 517



cm 32



sarba



Galattica



Galattica

R/550



Galattica - Space module 1
R/550.01



cm 202 x 72 h



Galattica - Space module 2
R/550.02



cm 202 x 81 h



Galattica - Monolite
R/550.03



cm 16 x 83 h



Galattica - Cosmic gate
R/550.04



cm 134 x 314 h





Galattica - Cosmic mirror
R/550.09



cm 42 x 38 x 200 h



Galattica - Star
R/550.08



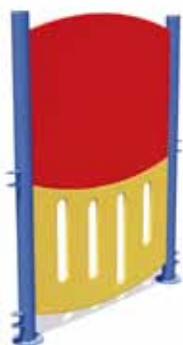
cm 29 x 28 h



Galattica - Mars
R/550.07



∅ cm 20



Galattica - Star panel
R/550.05



cm 127 x 150 h



Galattica - Missile
R/550.06



cm 12 x 62 h

Dinamiko sport MS/600

EN 1176

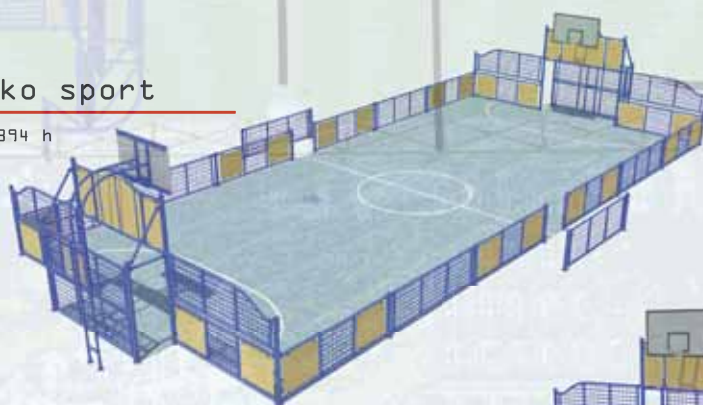




1

MS/600 | Dinamiko sport

cm 1184x2163x394 h



2

MS/600.01 | Dinamiko sport basic

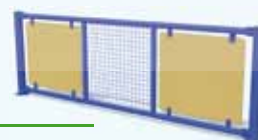
cm 412x945x394 h



3

MS/600.02 | Dinamiko sport modulo L

cm 10x322x106 h



4

MS/600.03 | Dinamiko sport modulo R

cm 10x322x106 h





Dinamiko Sport

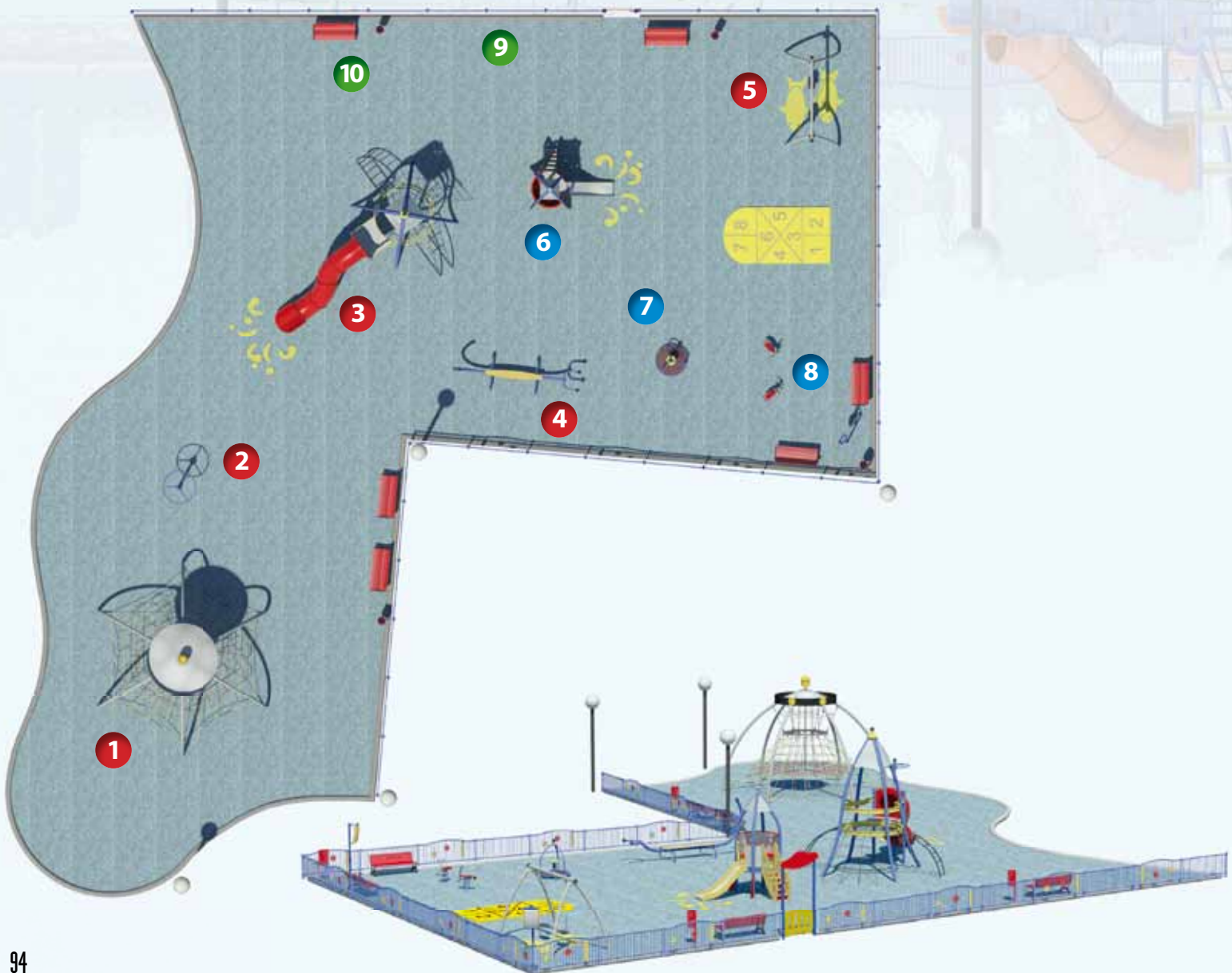
sarba

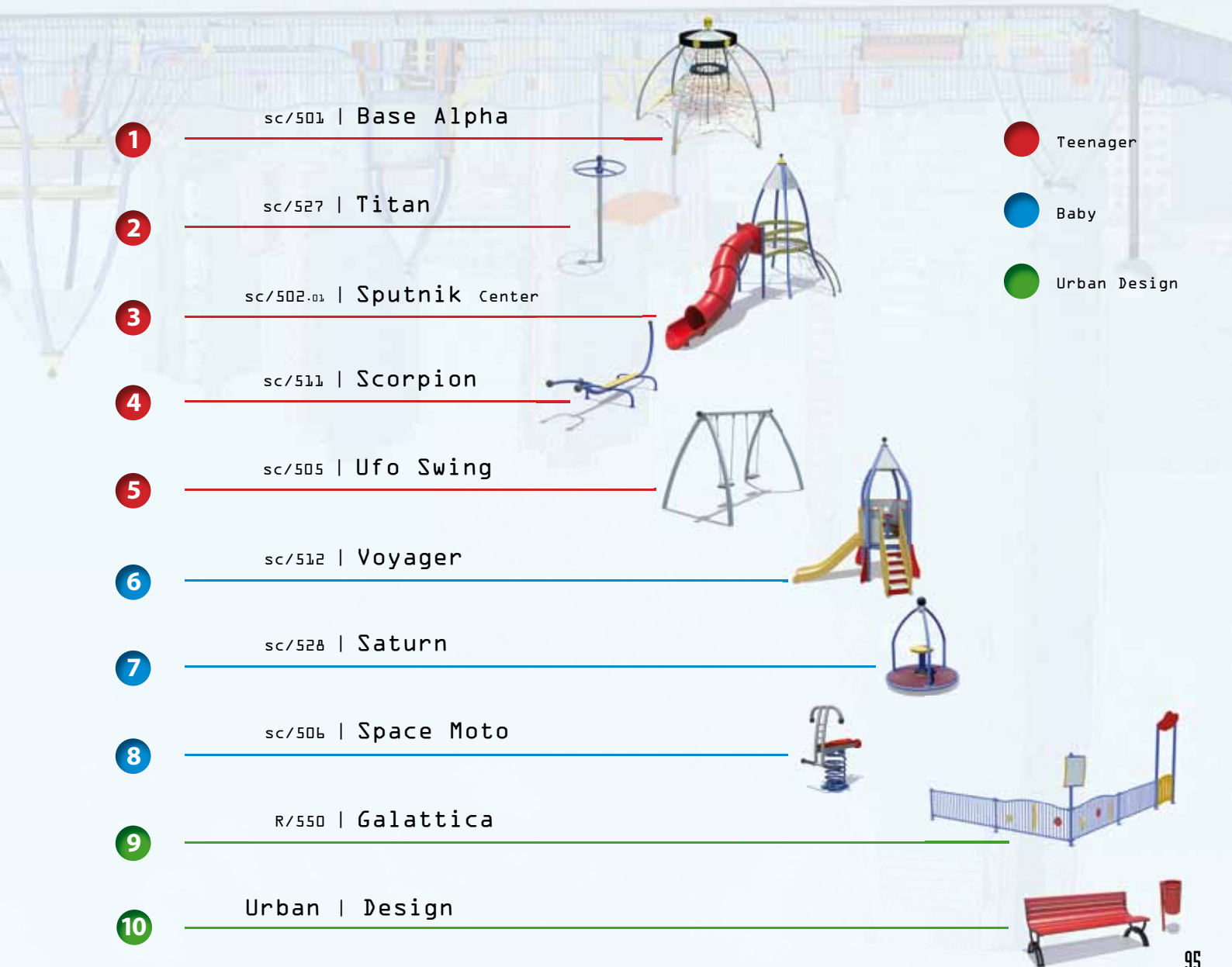


MS/600

Space City

Park





1

sc/501 | Base Alpha

Teenager

2

sc/527 | Titan

Baby

3

sc/502.03 | Sputnik Center

Urban Design

4

sc/511 | Scorpion

5

sc/505 | Ufo Swing

6

sc/512 | Voyager

7

sc/528 | Saturn

8

sc/506 | Space Moto

9

R/550 | Galattica

10

Urban | Design

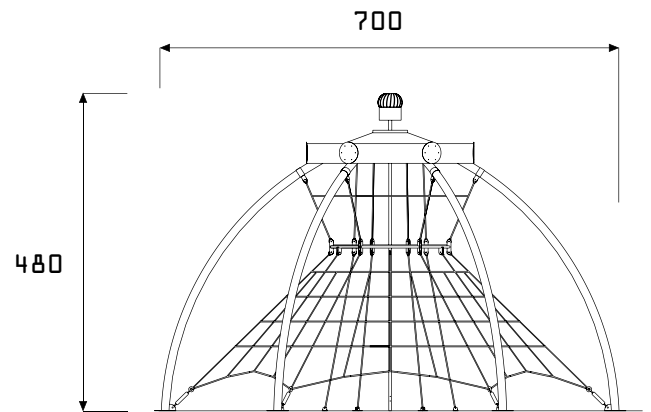
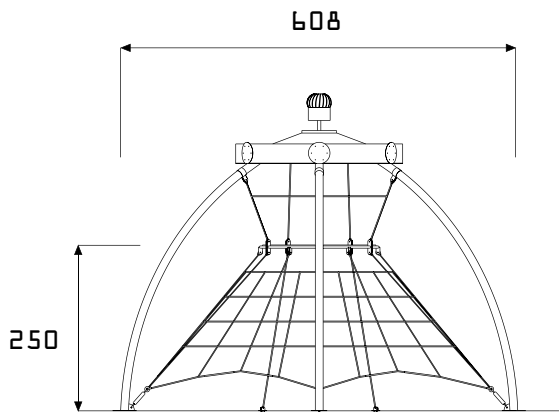
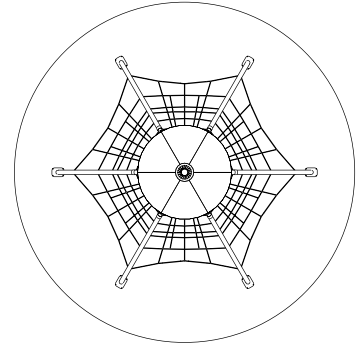
sarba





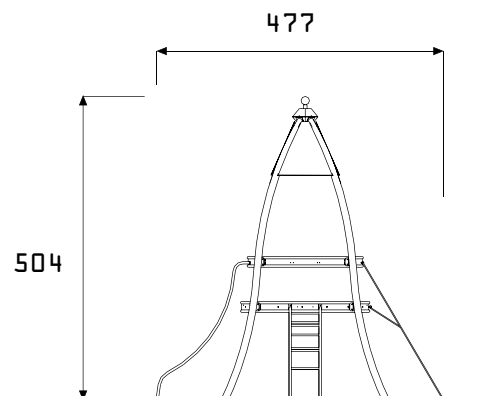
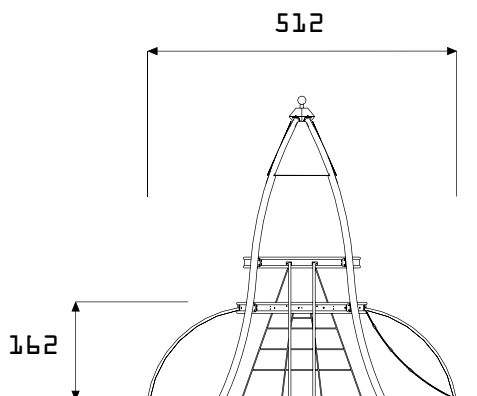
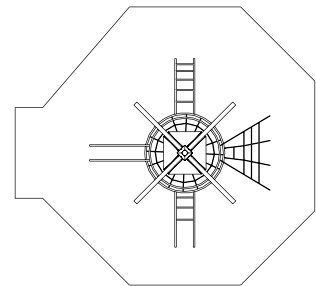
Sc/501 Base Alpha

1:200



Sc/502 Sputnik

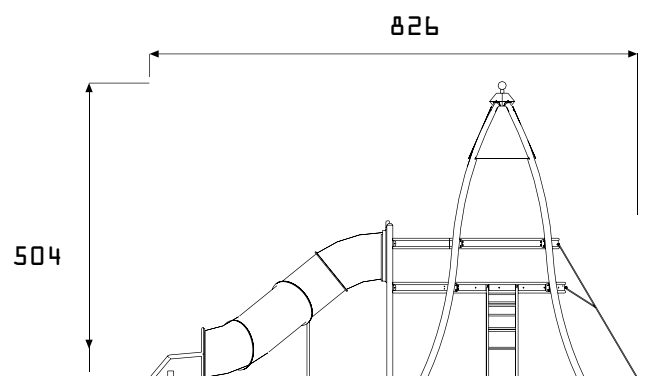
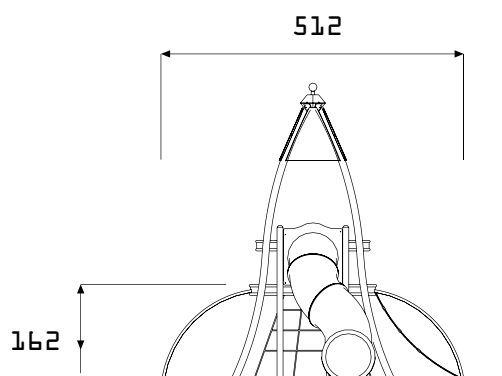
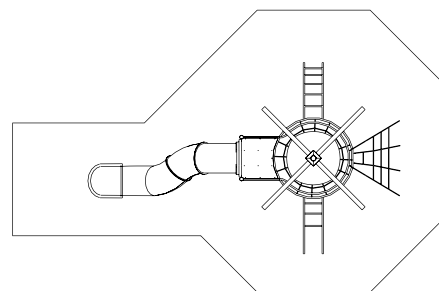
1:200



Sc/502.01 Sputnik Center



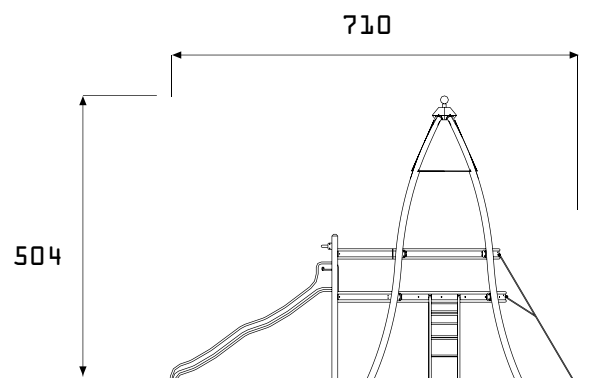
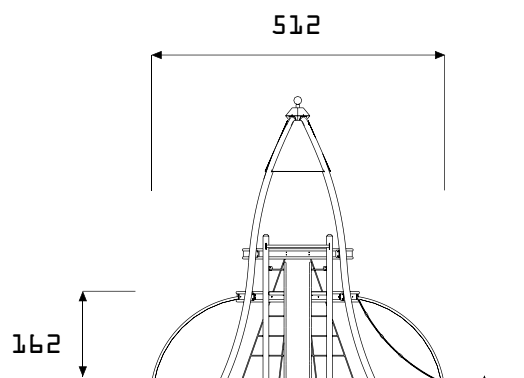
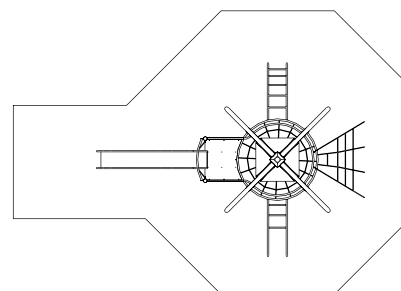
1:200



Sc/502.02 Sputnik Center 2



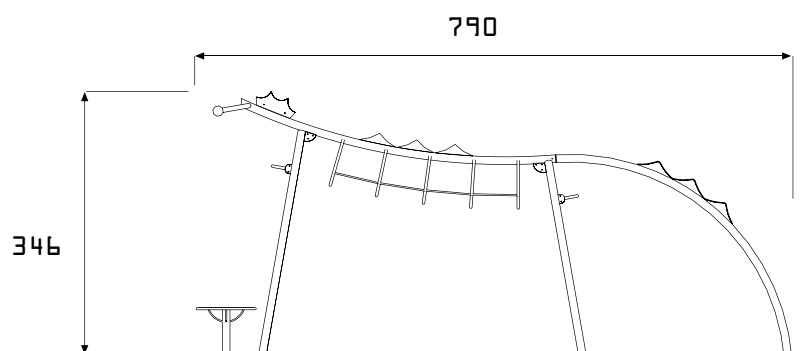
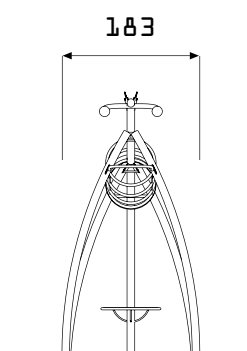
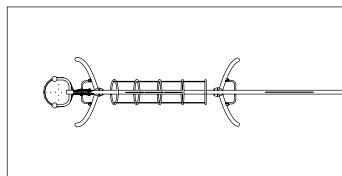
1:200



Sc/503 Alien



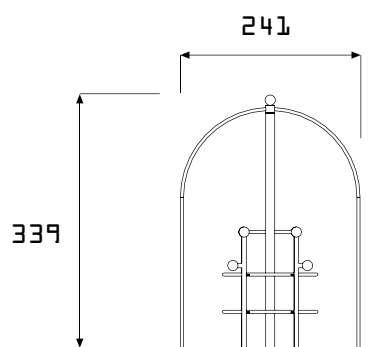
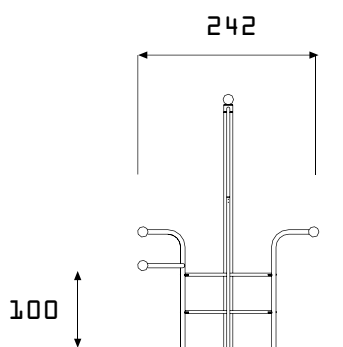
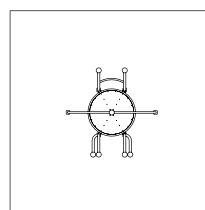
1:200



Sc/504 Lander

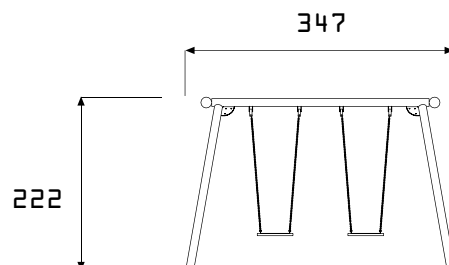
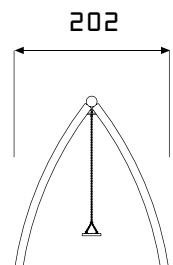
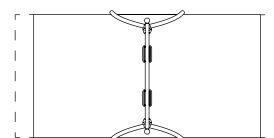


1:200



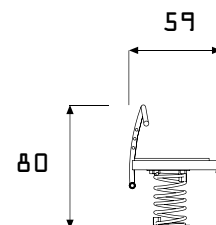
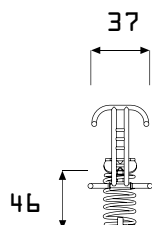
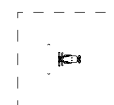
Sc/505 Ufo Swing

1:200



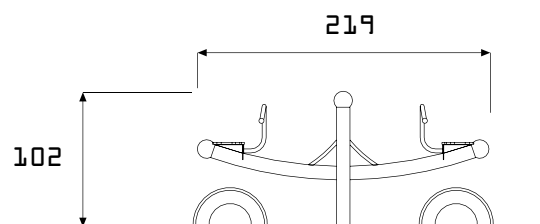
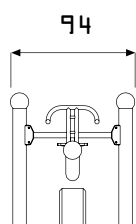
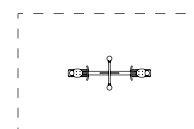
Sc/506 Spacemoto

1:200



Sc/507 Ranger

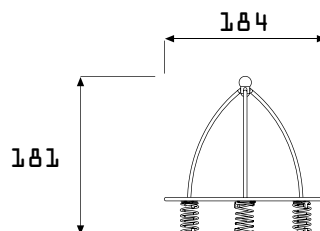
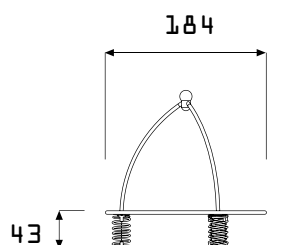
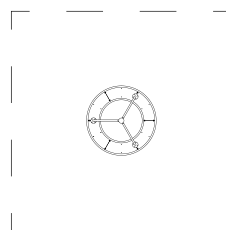
1:200



Sc/508 Explorer



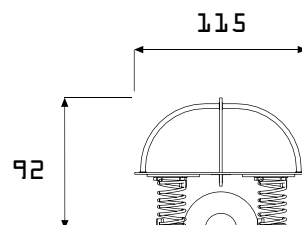
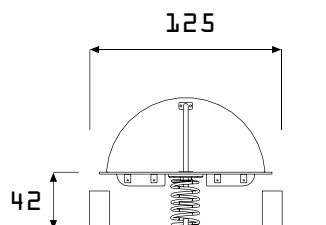
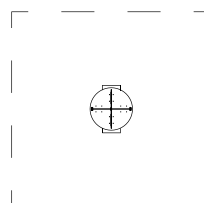
1:200



Sc/509 Mig



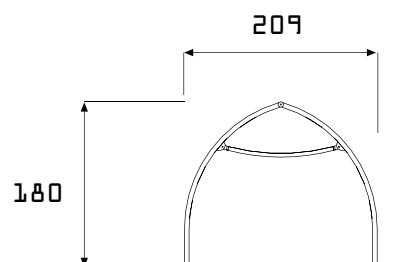
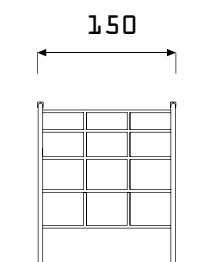
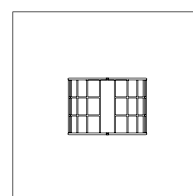
1:200



Sc/510 Radar



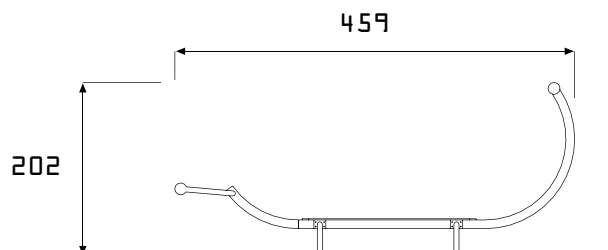
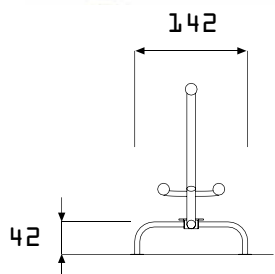
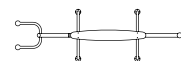
1:200



Sc/511 Scorpion



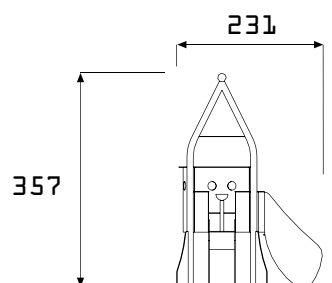
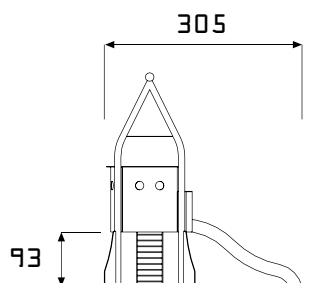
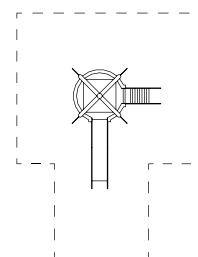
1:200



Sc/512 Voyager



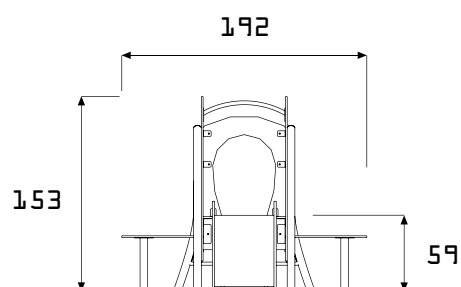
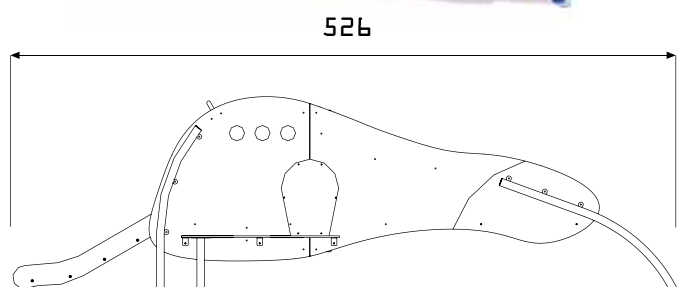
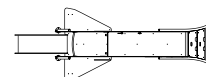
1:200



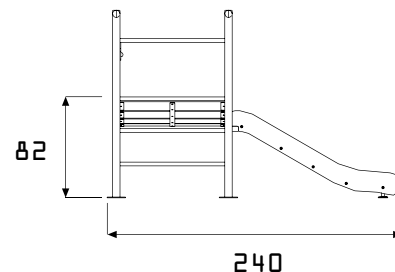
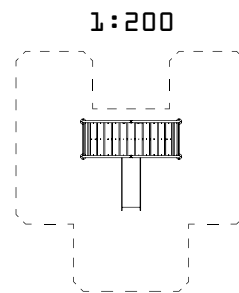
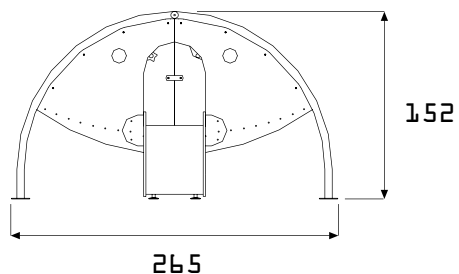
Sc/513 Predator



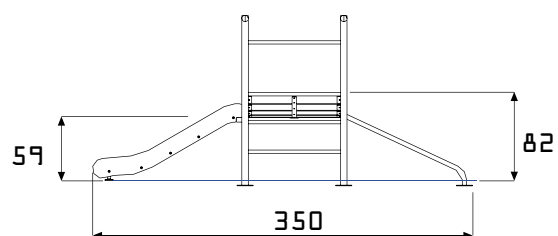
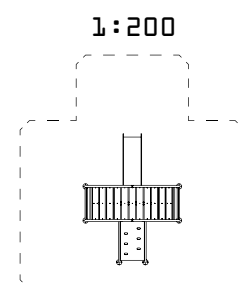
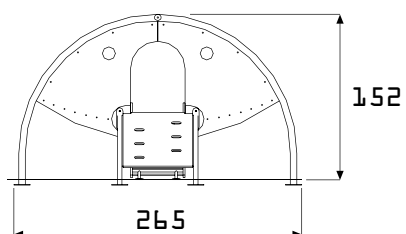
1:200



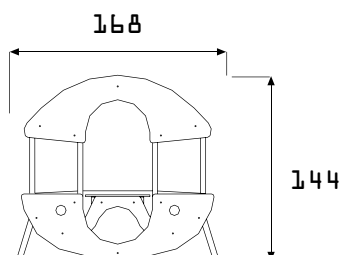
Sc/514 Arkanoid



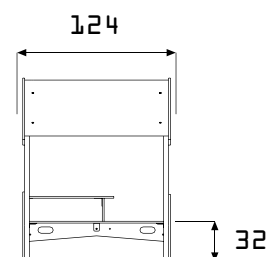
Sc/514.01 Arkanoid 2



Sc/515 Android

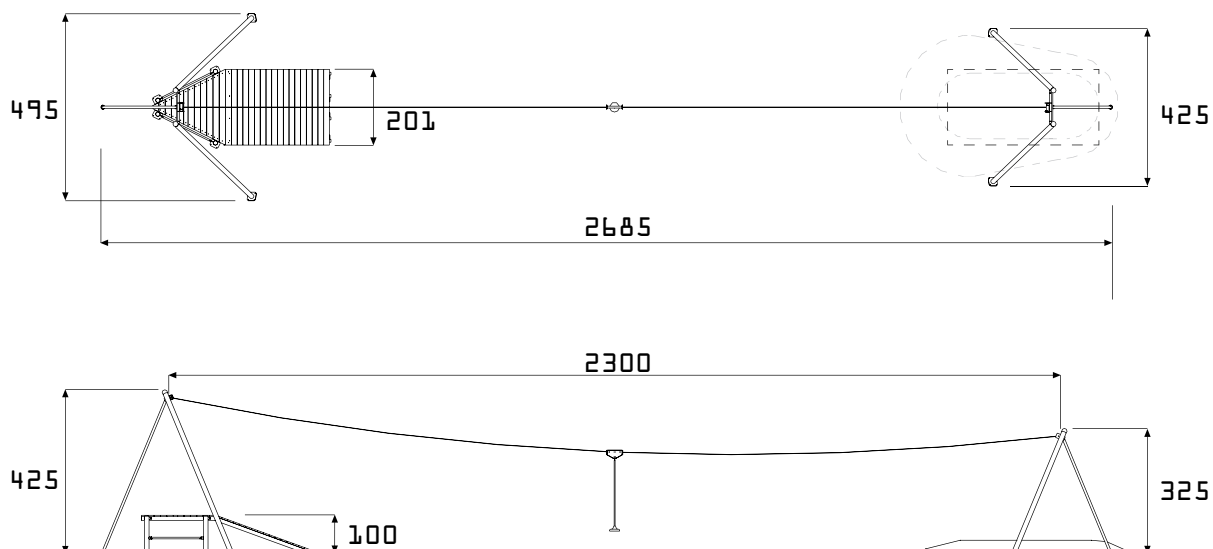


1:200



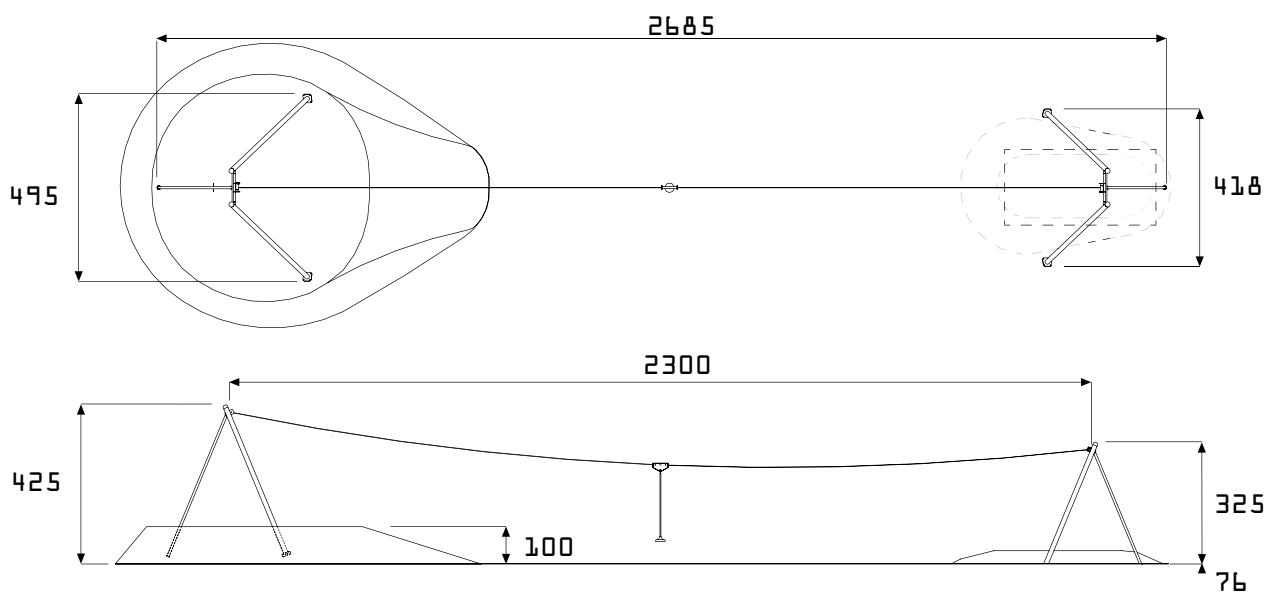
Sc/516 Asteroid

1:200



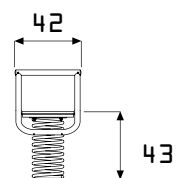
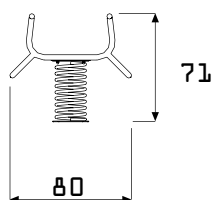
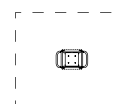
Sc/516.01 Asteroid 2

1:200



Sc/517 Bor

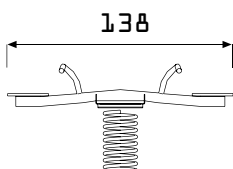
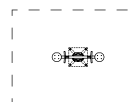
1:200



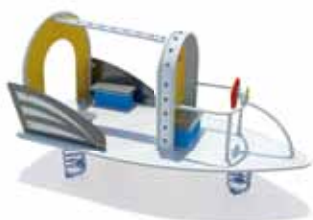
Sc/519 Vostock



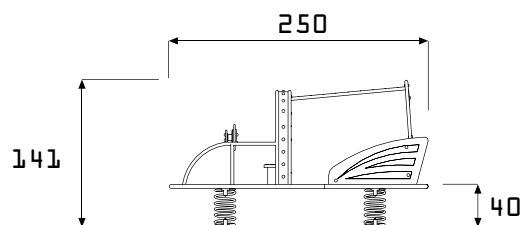
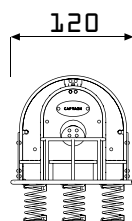
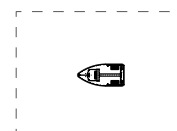
1:200



Sc/520 Enterprise



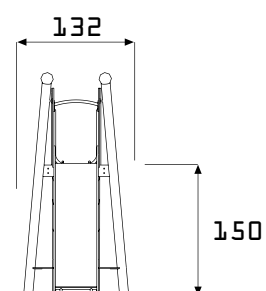
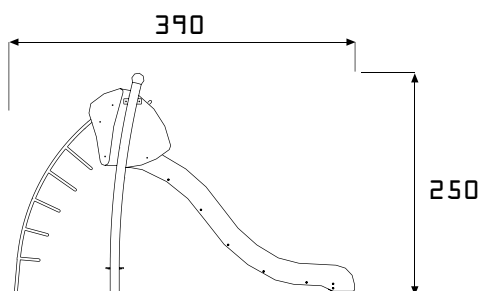
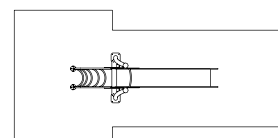
1:200



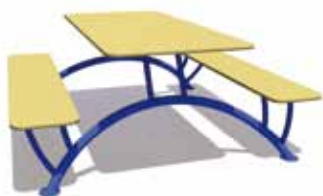
Sc/521 Triton



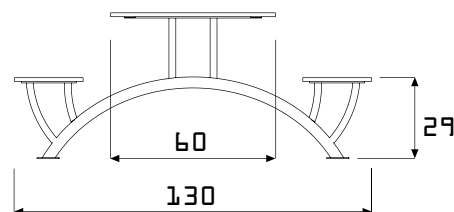
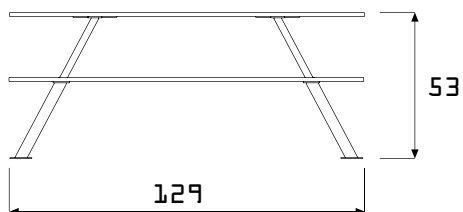
1:200



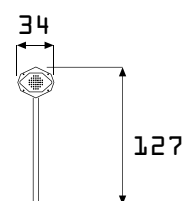
Sc/522 Control Panel



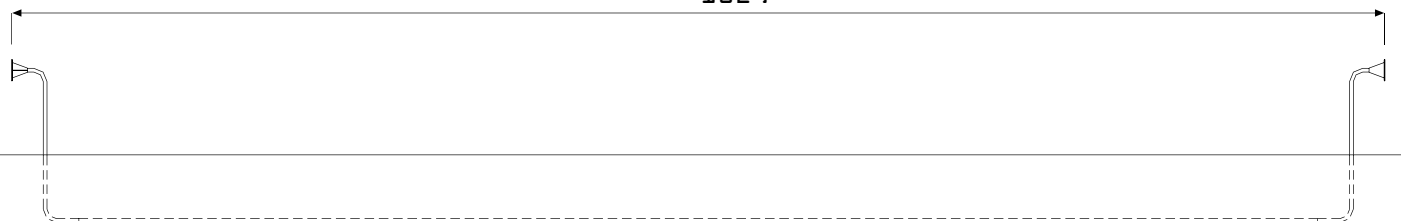
1:200



Sc/523 Tube

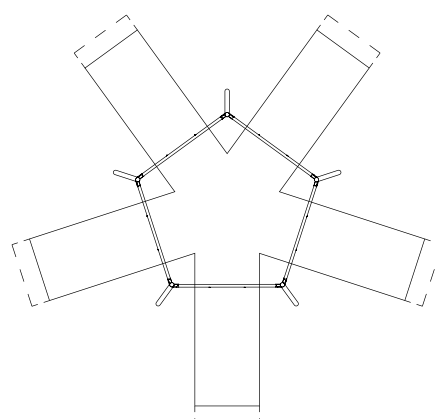


1829

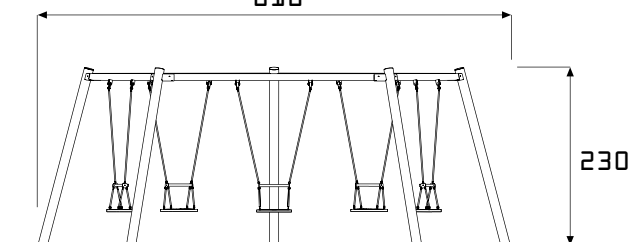


Sc/525 Kosmica

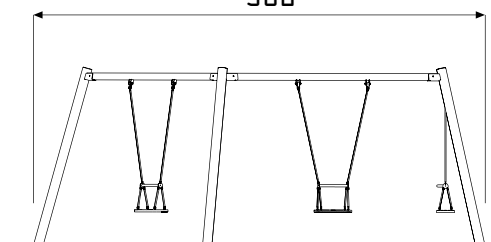
1:200



616



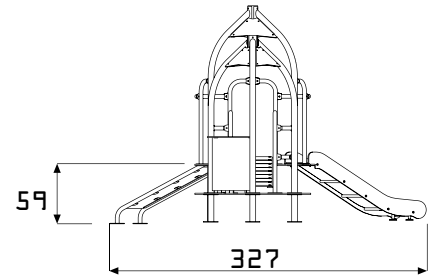
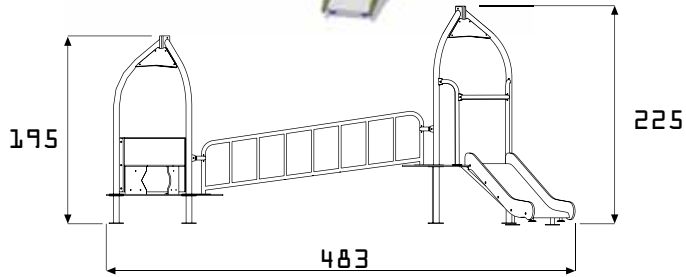
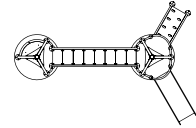
586



Sc/526 Jupiter



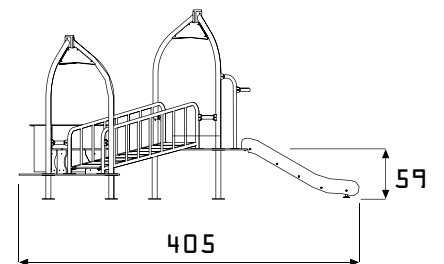
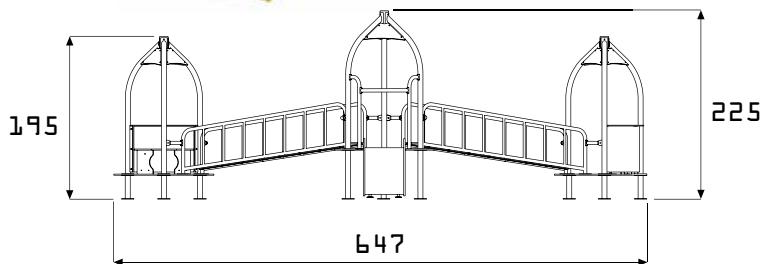
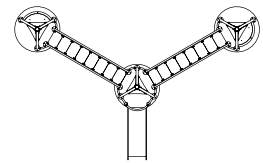
1:200



Sc/526.01 Jupiter center



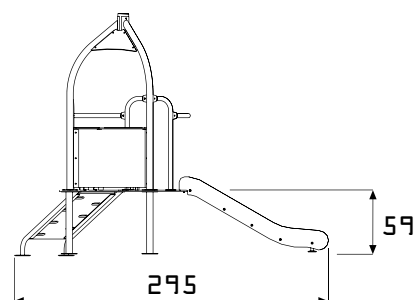
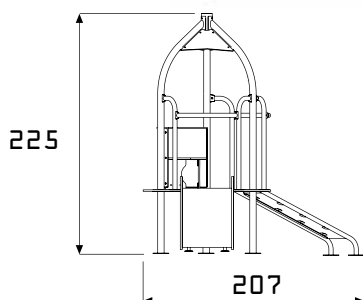
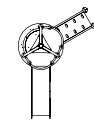
1:200



Sc/526.02 Jupiter Basic

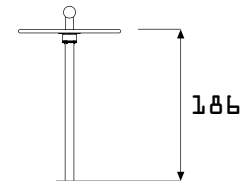
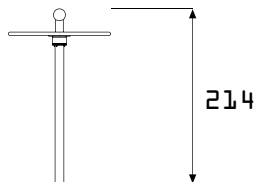
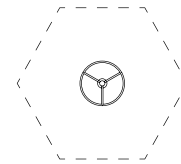


1:200



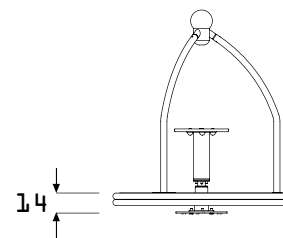
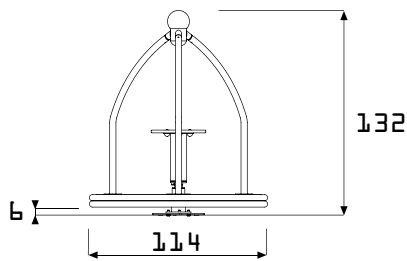
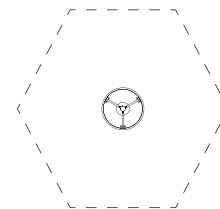
Sc/527 Titan

1:200



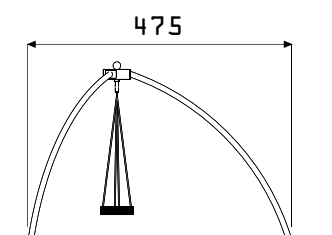
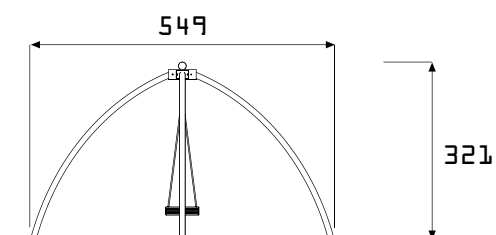
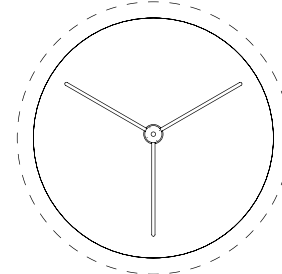
Sc/528 Saturn

1:200



Sc/529 Space Spinner

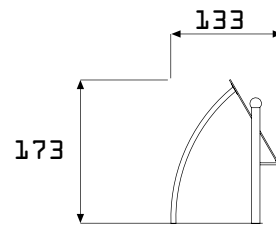
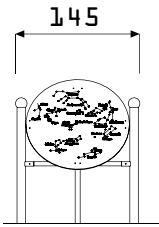
1:200



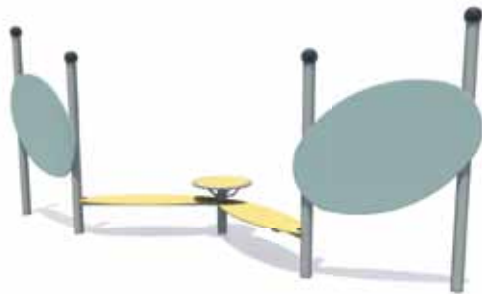
Sc/531 Astrolabio



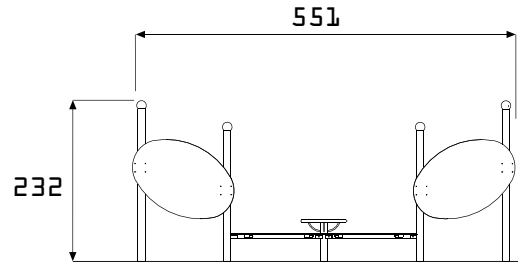
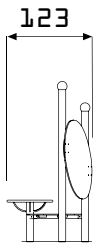
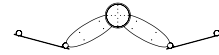
1:200



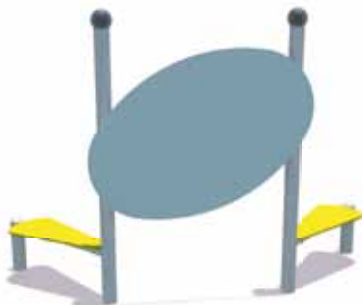
Sc/532 Moebius



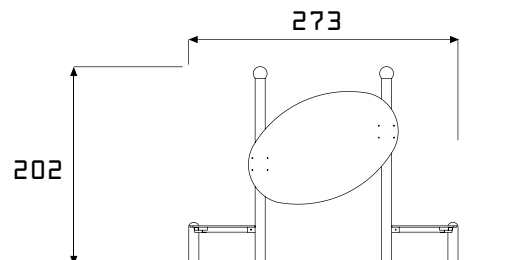
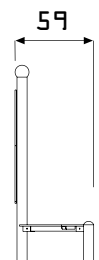
1:200



Sc/533 Black Hole



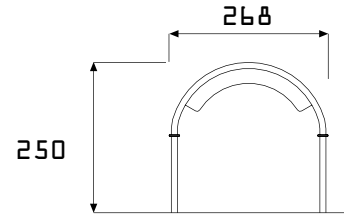
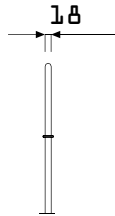
1:200



Sc/534 Stargate



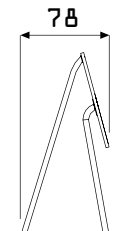
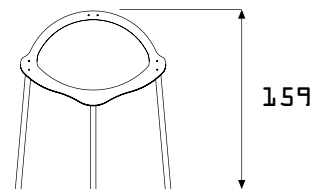
1:200



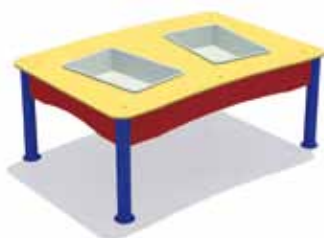
Sc/535 Space Panel



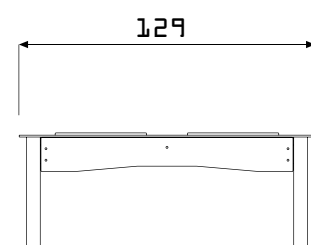
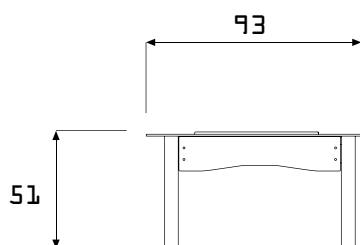
1:200



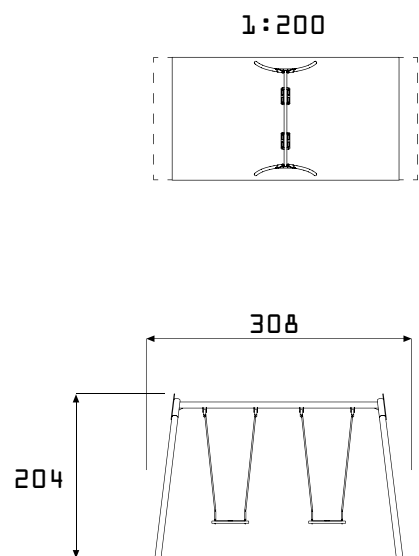
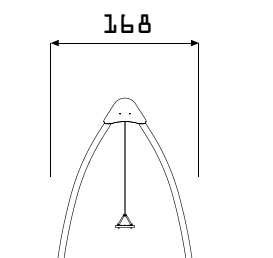
Sc/536 Aquarius



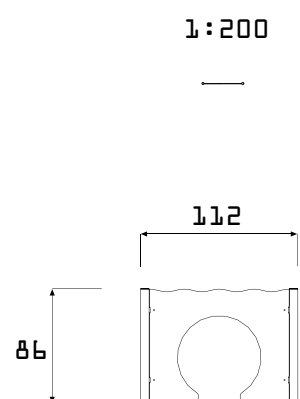
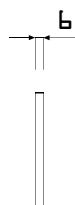
1:200



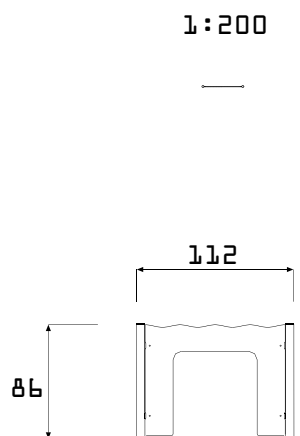
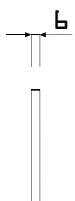
Sc/538 Star Swing



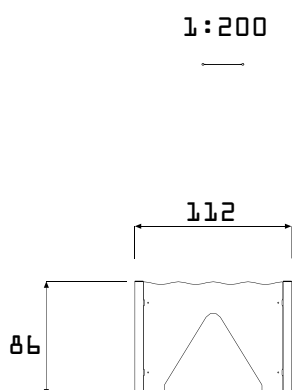
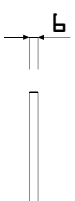
Sc/539.C Elettra C



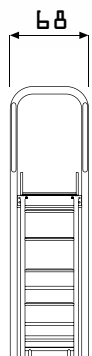
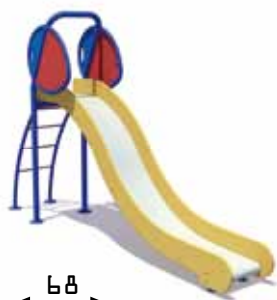
Sc/539.Q Elettra Q



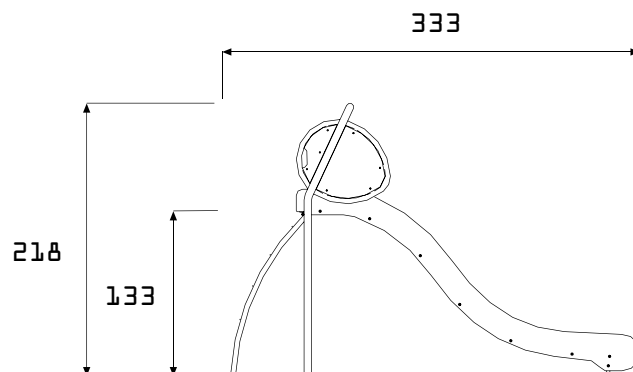
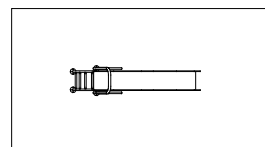
Sc/539.T Elettra T



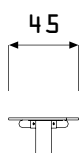
Sc/540 Vulcan



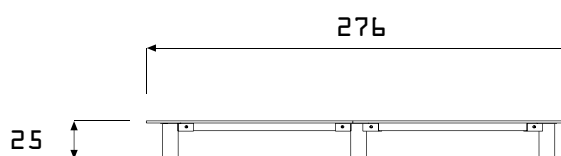
1:200



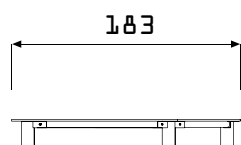
Sc/541 Eliptica



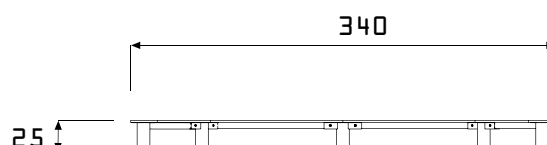
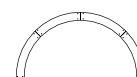
1:200



Sc/541.01 Eliptica



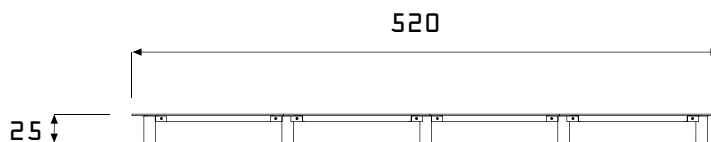
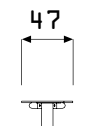
1:200



Sc/541.02 Eliptica



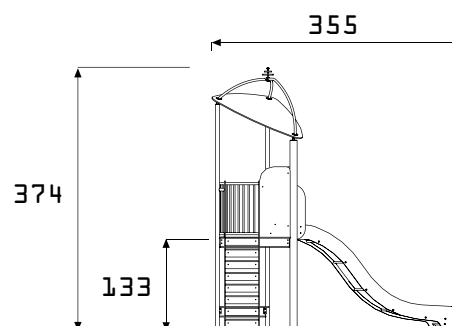
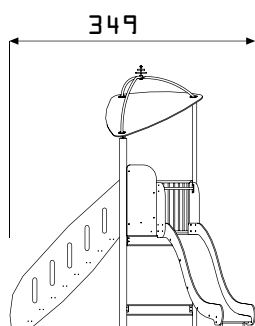
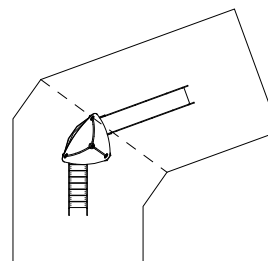
1:200



Sc/542 Skylab



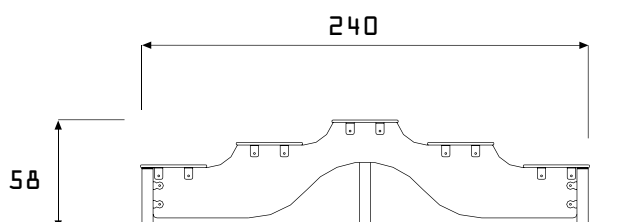
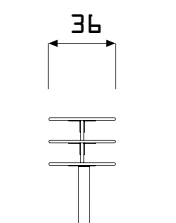
1:200



Sc/543 Europa



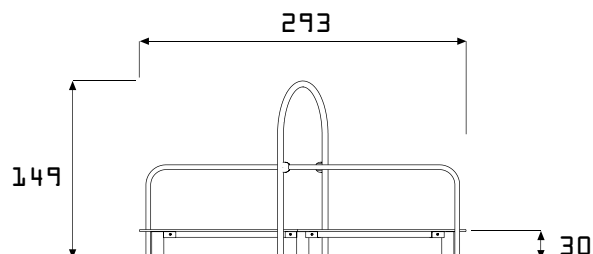
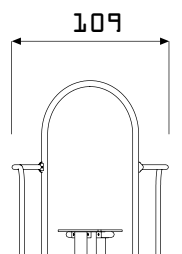
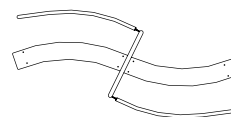
1:200



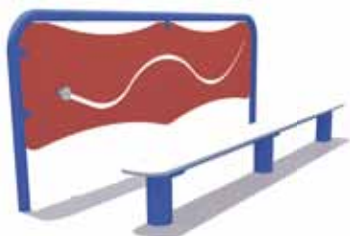
Sc/544 Callisto



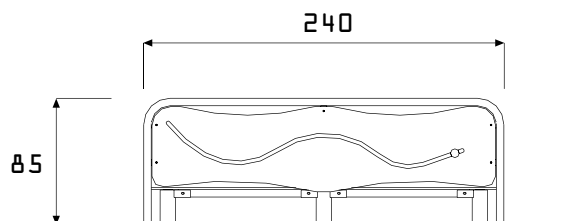
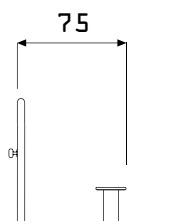
1:200



Sc/545 Io



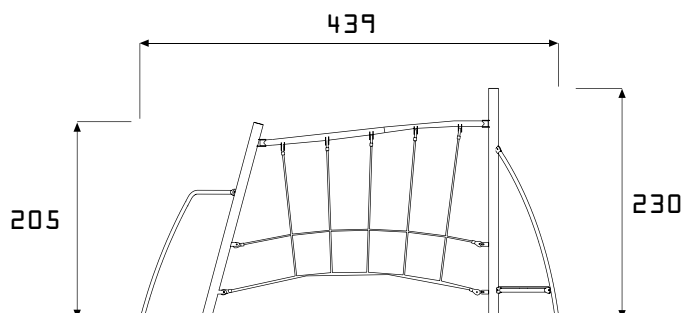
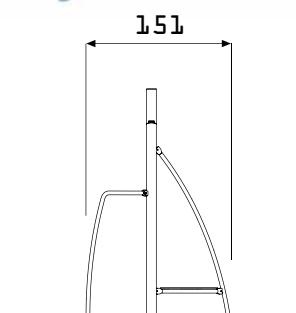
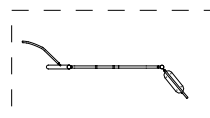
1:200



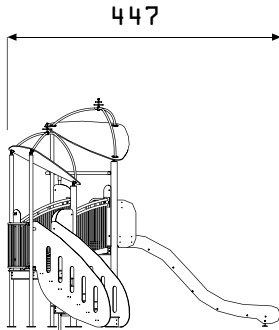
Sc/546 Ganymede



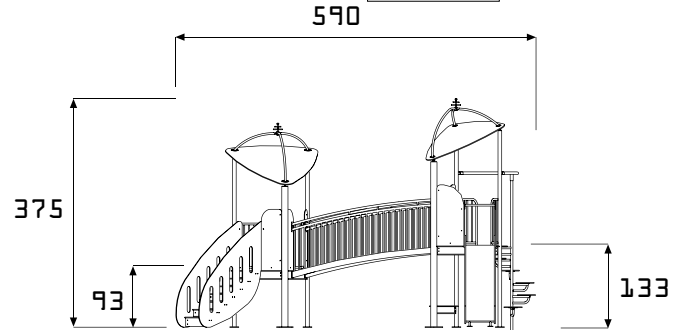
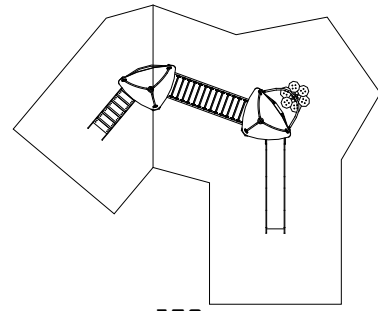
1:200



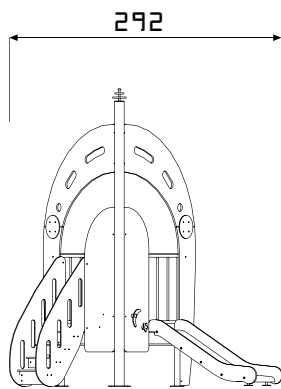
Sc/547 Sojuz



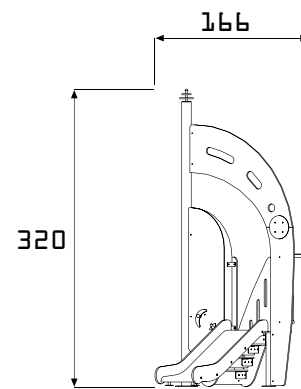
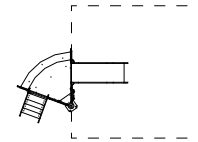
1:200



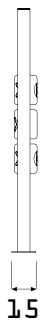
Sc/548 Apollo



1:200



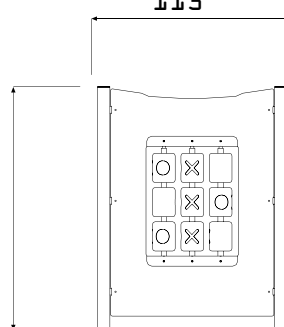
Sc/549 Lem



1:200

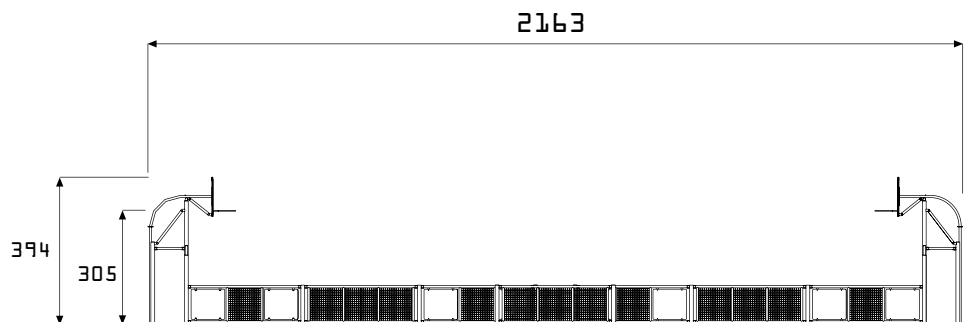
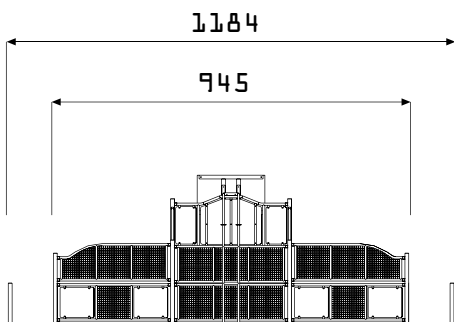
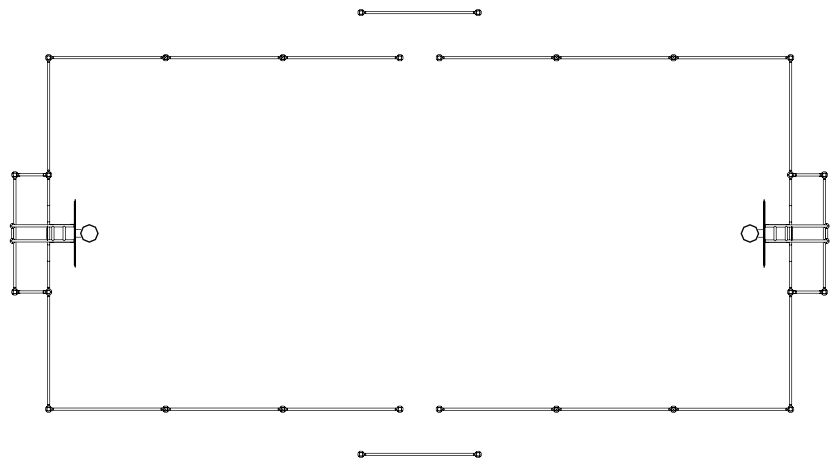


150

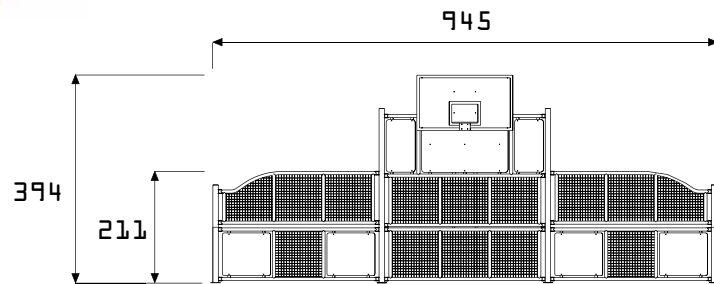
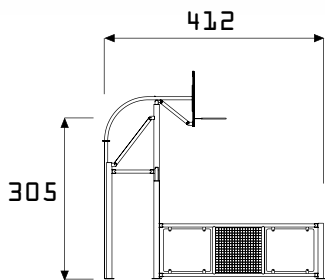
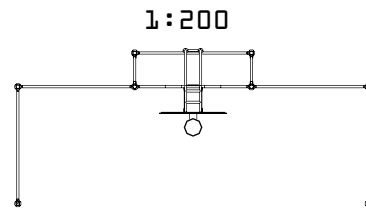




1:200



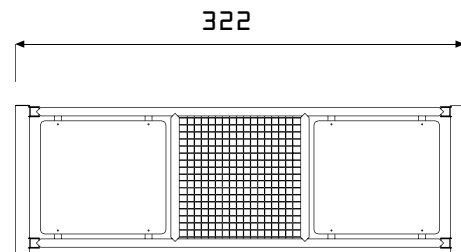
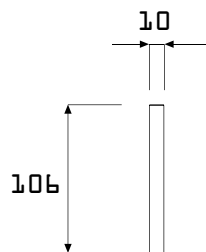
Ms/600.01 Dinamiko sport basic



Ms/600.02 Dinamiko sport modulo L



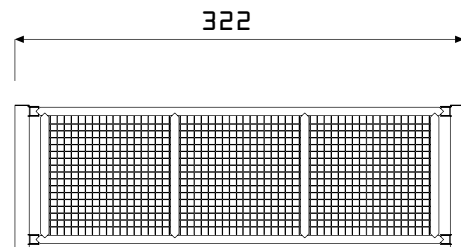
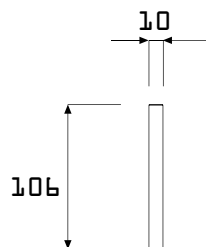
1:200



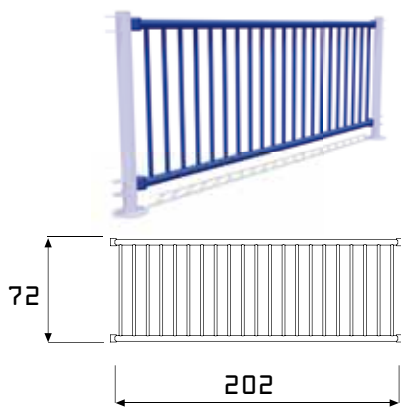
Ms/600.03 Dinamiko sport modulo R



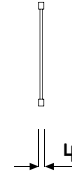
1:200



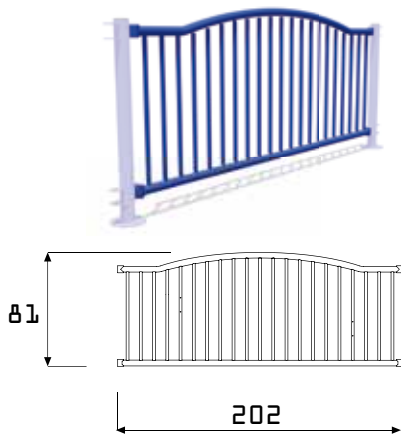
R/550.01 Galattica - Space Module 1



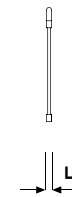
1:100



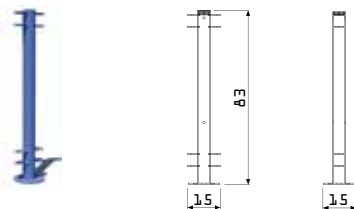
R/550.02 Galattica - Space Module 2



1:100



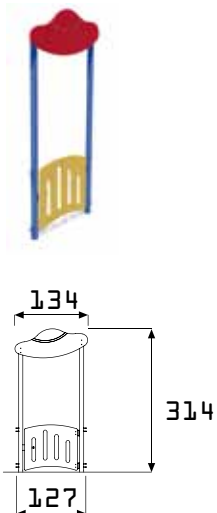
R/550.03 Galattica - Monolite



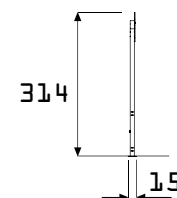
1:50



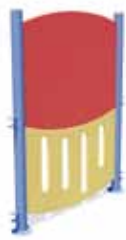
R/550.04 Galattica - Cosmic Gate



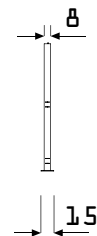
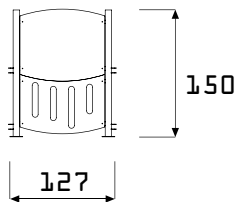
1:200



R/550.05 Galattica - Star Panel



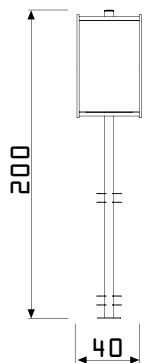
1 : 50



R/550.09 Galattica - Cosmic Mirror



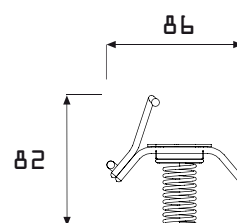
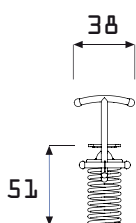
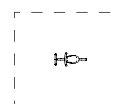
1 : 50



SC/551 Rea

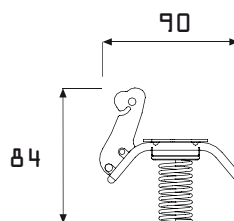
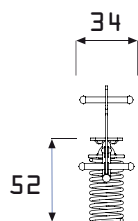
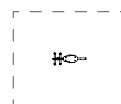


1 : 200



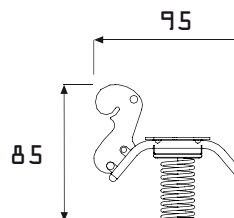
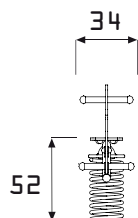
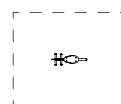
SC/552 Teti

1:200



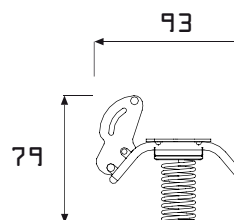
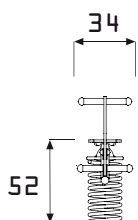
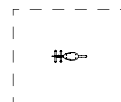
SC/553 Giapeto

1:200



SC/554 Dione

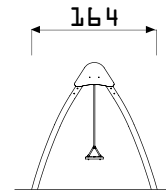
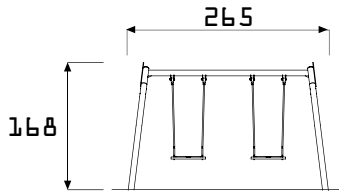
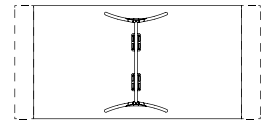
1:200



SC/555 Star Swing Baby



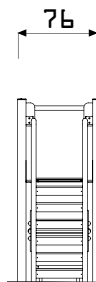
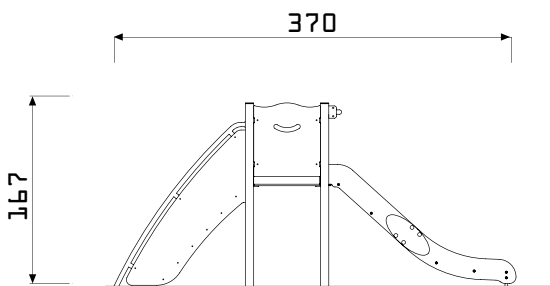
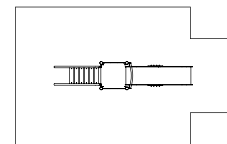
1:200



SC/556



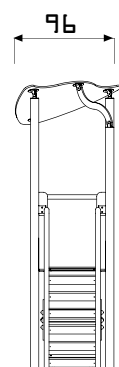
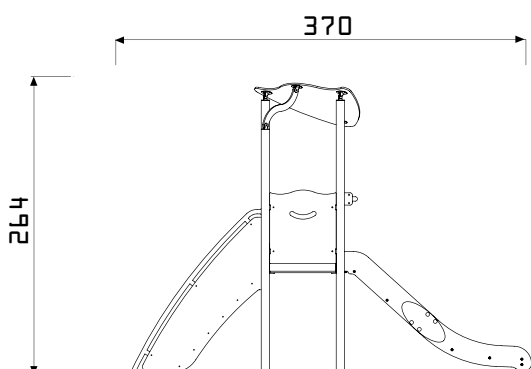
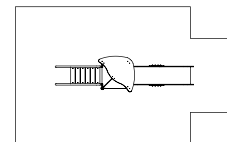
1:200



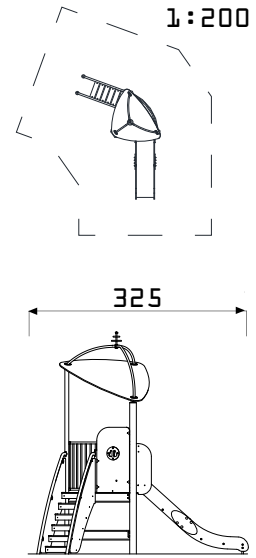
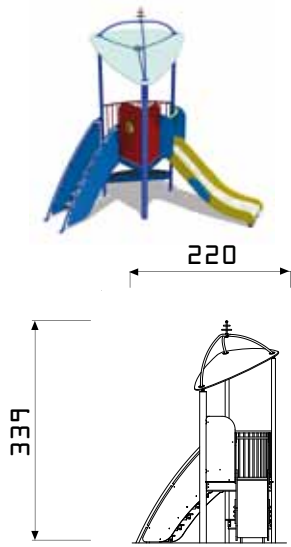
SC/556.01 Moon 01



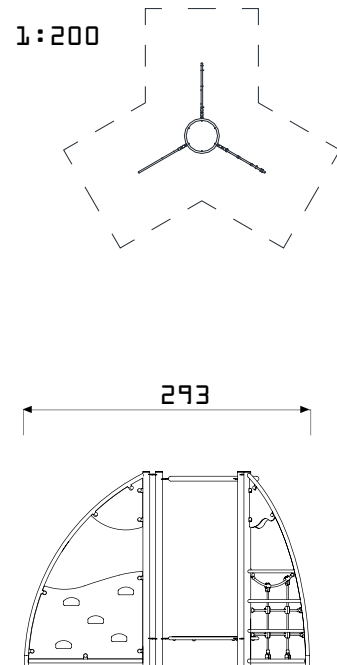
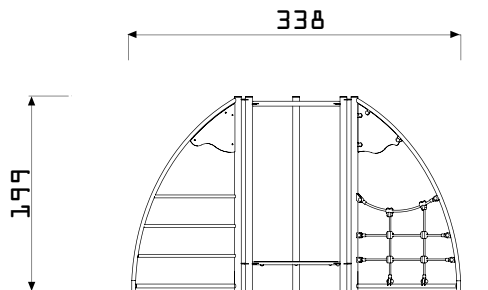
1:200



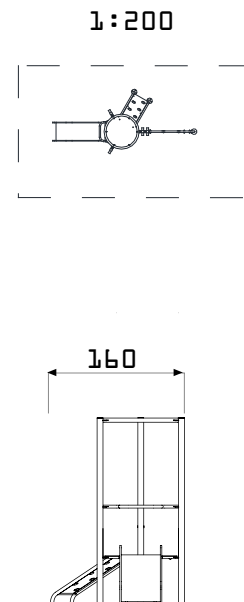
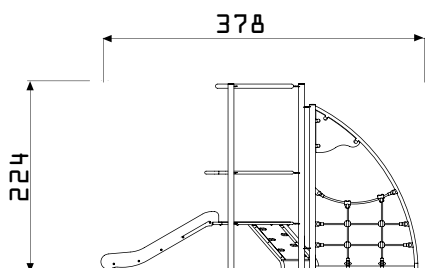
SC/557 Skylab



SC/570 Hubble



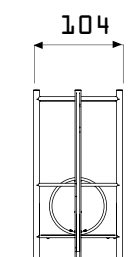
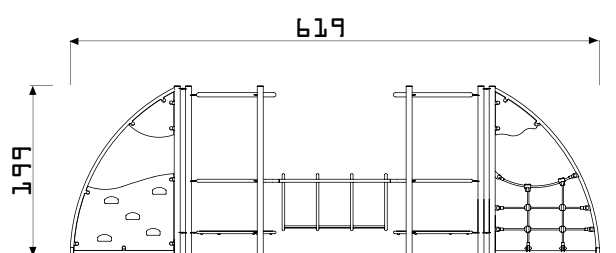
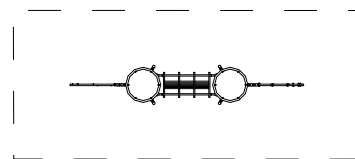
SC/571 Newton



SC/572 Tolomeo



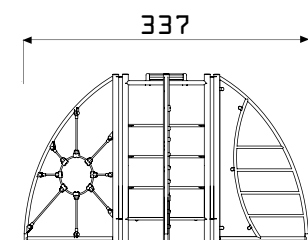
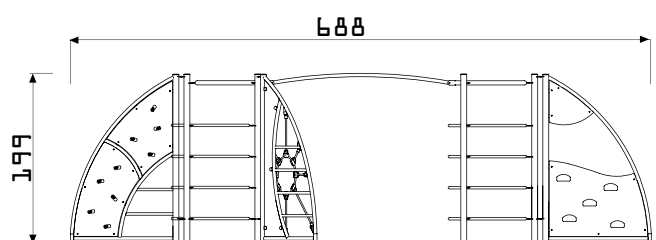
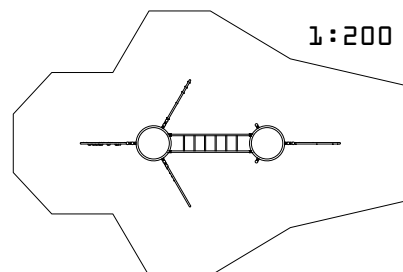
1:200



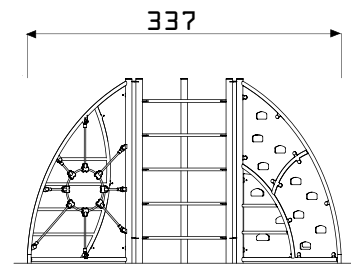
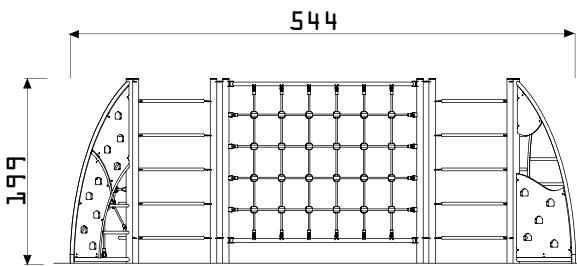
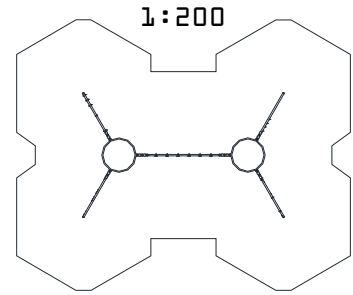
SC/573 Galileo



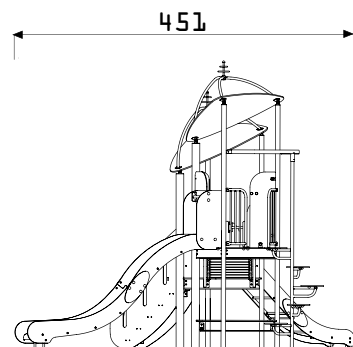
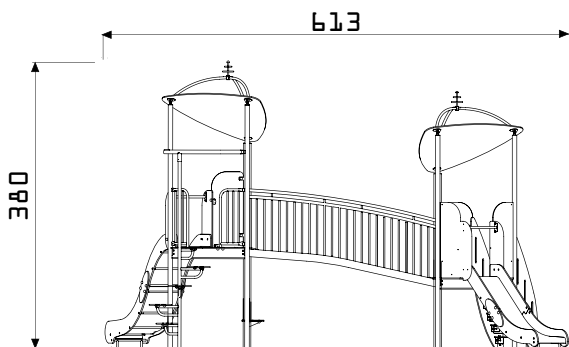
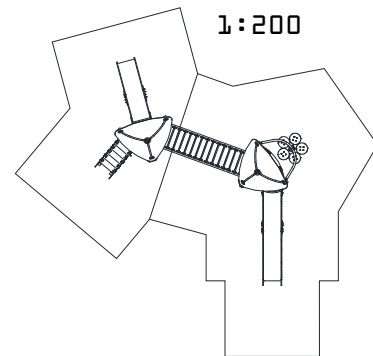
1:200



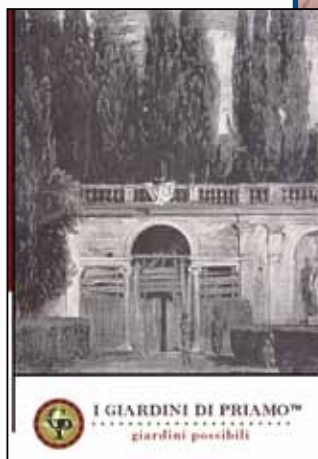
SC/574 Galileo 2



SC/547.01 Soyuz 01

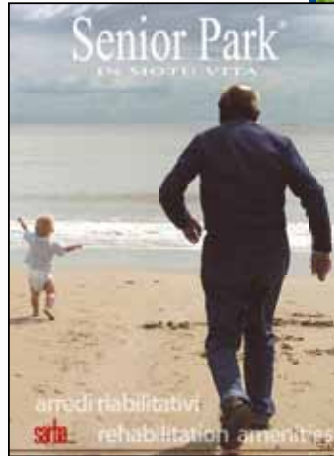


OTHER PRODUCTS



Playground
equipment
Classic Line

sarba



Therapeutic gardens

Rehabilitation amenities

SR0650C.REV.5 - MAGGIO 2012



Sarba

Sarba SpA

Via dei Trasporti, 7/9
41012 Fossoli di Carpi (MO)
ITALY

Tel. +39 059 657000 - Fax +39 059 657036

www.sarba.it - info@sarba.it - sarba@legalmail.it





Project editors
Paolo Barbieri
Daniele Tavani

Art directors
Daniele Tavani
Mario Valerio

Dtp manager
Daniele Tavani

Printed by
Grafiche Pioppi



I sarba

Via dei Trasporti, 7/9
41012 Fossoli di Carpi (MO) ITALIA
Tel. +39 059 657000
Fax +39 059 657036
www.sarba.it - info@sarba.it